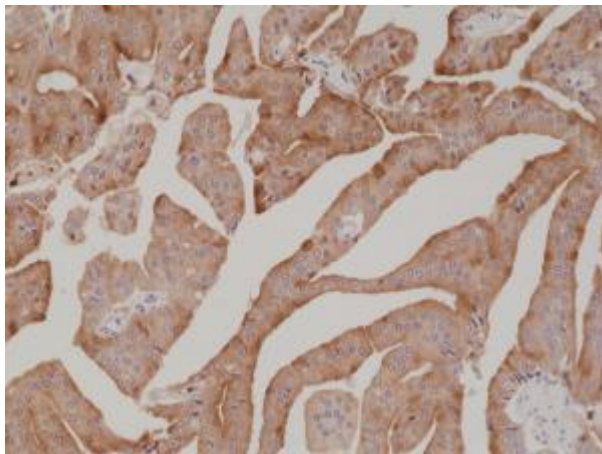


# Anti-PSA, Rabbit Monoclonal Antibody (RM323)

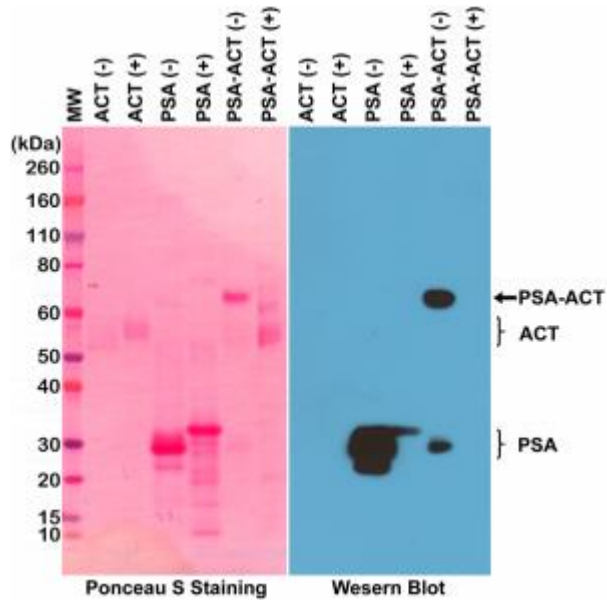
CATALOG NO.: A1847-50 50 µL.

**BACKGROUND DESCRIPTION:** Prostate-specific antigen (PSA) is also known as kallikrein III, seminin, semenogelase,  $\gamma$ -seminoprotein and P-30 antigen. It is a serine protease enzyme produced by the cells of the prostate gland. Most of PSA in the blood which is bound to serum proteins is known as total PSA, while a small amount which is not protein bound to is called free PSA. PSA liquifies the semen in the seminal coagulum and allows sperm to swim freely. PSA is often elevated in the presence of prostate cancer and in other prostate disorders. A blood test to measure PSA is considered to be the most effective test currently available for the early detection of prostate cancer. Furthermore, rising levels of PSA over time are associated with both localized and metastatic prostate cancer (CaP). Human PSA monoclonal antibody, is produced from the hybridoma resulting from fusion of SP2/0-Ag14 myeloma and B-lymphocytes obtained from mouse immunized with human total PSA purified from seminal plasma.

<b>ANTIBODY TYPE:</b>	Monoclonal
<b>CLONE:</b>	RM323
<b>HOST/ISOTYPE:</b>	Rabbit / Rabbit IgG.
<b>IMMUNOGEN:</b>	Native PSA protein purified from human seminal fluid.
<b>PURIFICATION:</b>	Protein A affinity purified from an animal origin-free culture supernatant.
<b>FORM:</b>	Liquid.
<b>FORMULATION:</b>	50% Glycerol/PBS with 1% BSA and 0.09% sodium azide
<b>SPECIES REACTIVITY:</b>	Human.
<b>STORAGE CONDITIONS:</b>	Store at -20°C; Avoid repeated freeze / thaw cycles.
<b>APPLICATIONS AND USAGE:</b>	Western Blot (WB-Non-Reduced): 1:1000-1:2500. IHC: 1:500-1:1000. ELISA: 1:1000-1:5000.



Immunohistochemical staining of formalin fixed and paraffin embedded human prostate cancer tissue section using anti-PSA rabbit monoclonal antibody (Clone RM323) at a 1:1000 dilution.



Western Blot of PSA (purified from human seminal fluid), ACT (alpha 1-antichymotrypsin, from human plasma), and PSA-ACT complex, under non-reduced (-) or reduced (+) conditions, using anti-PSA rabbit monoclonal antibody (Clone RM323) at a 1:2500 dilution.

#### RELATED PRODUCTS:

- Anti-PSA Antibody (5B10D4) (Cat# A1345).
- Anti-PSA Antibody (1G9G8) (Cat# A1347).
- Anti-PSA Antibody (4A5D10) (Cat# A1348).
- Anti-PSA Antibody (8A9B8) (Cat# A1346).
- Prostate Specific Antigen (PSA) Activity Assay Kit (Fluorometric) (Cat# K962).

**FOR RESEARCH USE ONLY! Not to be used on humans.**