

# Anti-Cytokeratin 17 (CK-17) Rabbit Monoclonal Antibody (RM351)

---

CATALOG NO.: A1849-50 50  $\mu$ L.

---

**BACKGROUND DESCRIPTION:** Involved in the organization of myofibers. Together with KRT8, helps to link the contractile apparatus to dystrophin at the costameres of striated muscle.

**ANTIBODY TYPE:** Monoclonal

**CLONE:** RM351

**HOST/ISOTYPE:** Rabbit / Rabbit IgG.

**IMMUNOGEN:** A peptide corresponding to C-terminus of human Cytokeratin-17.

**PURIFICATION:** Protein A affinity purified from an animal origin-free culture supernatant.

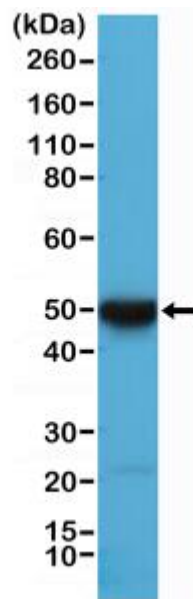
**FORM:** Liquid.

**FORMULATION:** 50% Glycerol/PBS with 1% BSA and 0.09% sodium azide

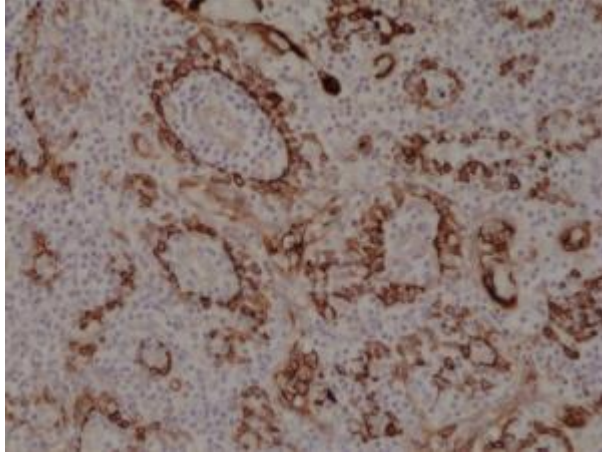
**SPECIES REACTIVITY:** Human.

**STORAGE CONDITIONS:** Store at -20°C; Avoid repeated freeze / thaw cycles.

**APPLICATIONS AND USAGE:** IHC: 1:500-1:1000.  
Western Blot: 1:1000-1:20000.



Western Blot of HeLa cell lysate using anti-CK-17 rabbit monoclonal antibody (Clone RM351) at a 1:10000 dilution.



Immunohistochemical staining of formalin fixed and paraffin embedded human tonsil tissue section using anti-CK-17 rabbit monoclonal antibody (Clone RM351) at a 1:1000 dilution.

**RELATED PRODUCTS:**

Anti-Cytokeratin 18 Antibody (IHC018) (A1499)  
Anti-Cytokeratin 14 Antibody (IHC555) (A1498)  
Anti-Cytokeratin 19 Antibody (IHC019) (A1517)  
Anti-Cytokeratin 5, Rabbit Monoclonal Antibody (A1136)  
Anti-Cytokeratin-8 Rabbit Monoclonal Antibody (A1608)

***FOR RESEARCH USE ONLY! Not to be used on humans.***