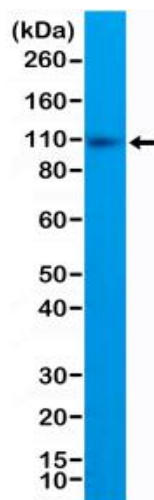


# Anti-CD10 Rabbit Monoclonal Antibody (RM337)

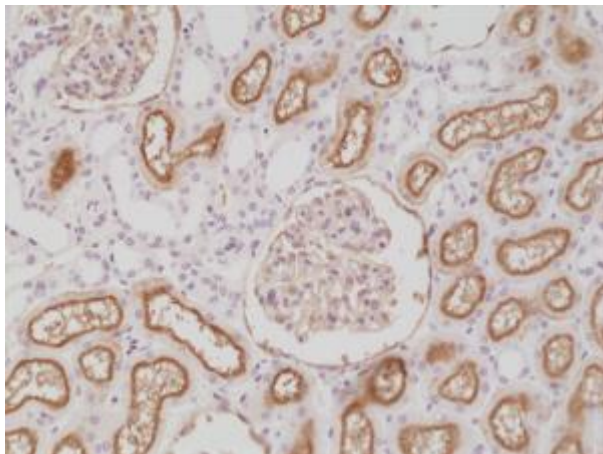
CATALOG NO.: A1850-50 50 µL.

**BACKGROUND DESCRIPTION:** Cluster of differentiation 10 (CD10), membrane metallo-endopeptidase, neutral endopeptidase (NEP), Nephrylsin, and common acute lymphoblastic leukemia antigen (CALLA), is a 90-110-kDa type II transmembrane glycoprotein normally expressed by a variety of tissues, including epithelial cells of the prostate, kidney, intestine, endometrium, adrenal glands, and lung. This zinc-dependent metalloprotease enzyme cleaves peptide bonds on the amino side of hydrophobic residues and inactivates a variety of physiologically active secreted peptides. CD20 is thought to be the rate-limiting degrading enzyme of amyloid  $\beta$  peptide ( $A\beta$ ) whose abnormal misfolding and aggregation in neural tissue has been implicated in the development of Alzheimer's disease (AD). CD10 is also identified as the common acute lymphoblastic leukemia antigen (CALLA) present on leukemic cells of pre-B phenotype, and thus serves as the most important biomarker in the diagnosis of human acute lymphocytic leukemia (ALL).

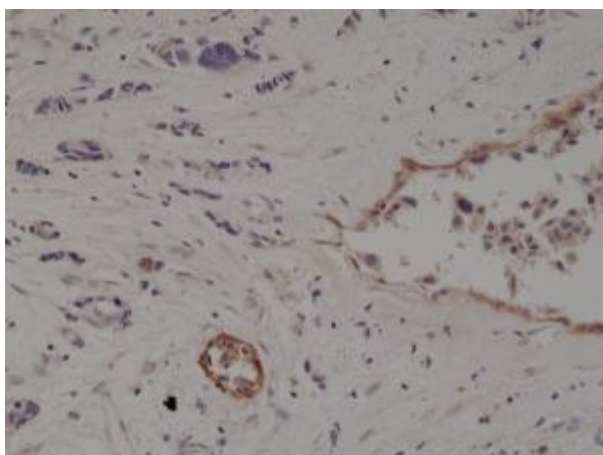
<b>ANTIBODY TYPE:</b>	Monoclonal
<b>CLONE:</b>	RM337
<b>HOST/ISOTYPE:</b>	Rabbit / Rabbit IgG.
<b>IMMUNOGEN:</b>	A peptide corresponding to the N-terminus of human CD10.
<b>PURIFICATION:</b>	Protein A affinity purified from an animal origin-free culture supernatant.
<b>FORM:</b>	Liquid.
<b>FORMULATION:</b>	50% Glycerol/PBS with 1% BSA and 0.09% sodium azide
<b>SPECIES REACTIVITY:</b>	Human.
<b>STORAGE CONDITIONS:</b>	Store at -20°C; Avoid repeated freeze / thaw cycles.
<b>APPLICATIONS AND USAGE:</b>	IHC: 1:200-1:500. Western Blot: 1:1000-12000.



Western Blot of Raji cell lysate using anti-CD10 rabbit monoclonal antibody (Clone RM337) at a 1:1000 dilution.



Immunohistochemical staining of formalin fixed and paraffin embedded human kidney tissue section using anti-CD10 rabbit monoclonal antibody (Clone RM337) at a 1:200 dilution.



Immunohistochemical staining of formalin fixed and paraffin embedded human breast cancer tissue section using anti-CD10 rabbit monoclonal antibody (Clone RM337) at a 1:200 dilution.

**RELATED PRODUCTS:**

Neprilysin Activity Assay Kit (Fluorometric) (Cat# K487).  
Neprilysin Inhibitor Screening Kit (Fluorometric) (Cat# K996).  
Human CellExp™ Neprilysin /CD10, human recombinant (Cat# 7445).

***FOR RESEARCH USE ONLY! Not to be used on humans.***