

Anti-CD3E Rabbit Monoclonal Antibody (RM344)

CATALOG NO.: A1851-50 50 µL.

BACKGROUND DESCRIPTION: The CD3 complex mediates signal transduction, resulting in T-cell activation and proliferation. Required for normal immune responses.

ANTIBODY TYPE: Monoclonal

CLONE: RM344

HOST/ISOTYPE: Rabbit / Rabbit IgG.

IMMUNOGEN: A peptide corresponding to the C-terminus of human CD3 epsilon chain.

PURIFICATION: Protein A affinity purified from an animal origin-free culture supernatant.

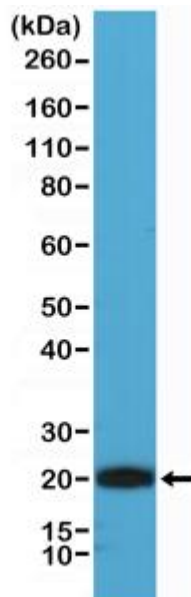
FORM: Liquid.

FORMULATION: 50% Glycerol/PBS with 1% BSA and 0.09% sodium azide

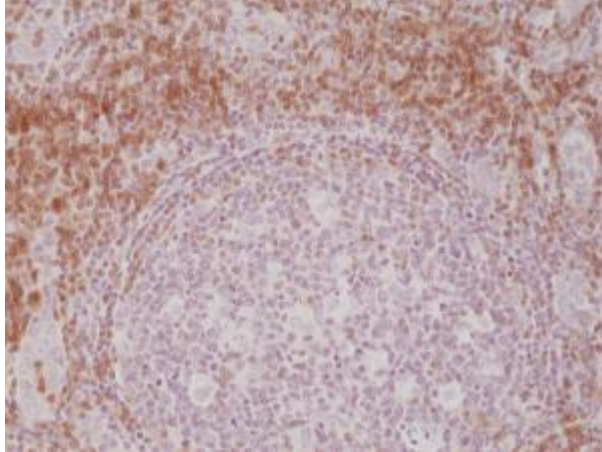
SPECIES REACTIVITY: Human.

STORAGE CONDITIONS: Store at -20°C; Avoid repeated freeze / thaw cycles.

APPLICATIONS AND USAGE: Western Blot: 1:1000-1:2000.
IHC: 1:100-1:200.



Western Blot of Jurkat cell lysate using anti-CD3e rabbit monoclonal antibody (Clone RM344) at a 1:1000 dilution.



Immunohistochemical staining of formalin fixed and paraffin embedded human Tonsil tissue section using anti-CD3e rabbit monoclonal antibody (Clone RM344) at a 1:200 dilution.

RELATED PRODUCTS:

Anti-CD3E Antibody (Cat# A1386).

Human CellExp™ CD3 epsilon & CD3 delta Heterodimer, Human Recombinant (Cat# P1183).

Anti-CD3e Antibody (C3e/1308) (Cat# A1523).

CD3E, human recombinant (Cat# 7342).

FOR RESEARCH USE ONLY! Not to be used on humans.