

Anti-GST3/GST pi Rabbit Monoclonal Antibody (RM347)

CATALOG NO.: A1854-50 50 µL.

BACKGROUND DESCRIPTION: Conjugation of reduced glutathione to a wide number of exogenous and endogenous hydrophobic electrophiles. Regulates negatively CDK5 activity via p25/p35 translocation to prevent neurodegeneration.

ANTIBODY TYPE: Monoclonal

CLONE: RM347

HOST/ISOTYPE: Rabbit / Rabbit IgG.

IMMUNOGEN: A peptide corresponding to the C-terminus of human GSTP1.

PURIFICATION: Protein A affinity purified from an animal origin-free culture supernatant.

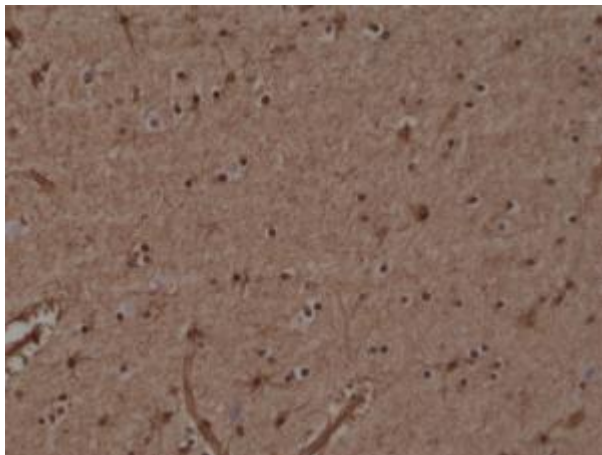
FORM: Liquid.

FORMULATION: 50% Glycerol/PBS with 1% BSA and 0.09% sodium azide

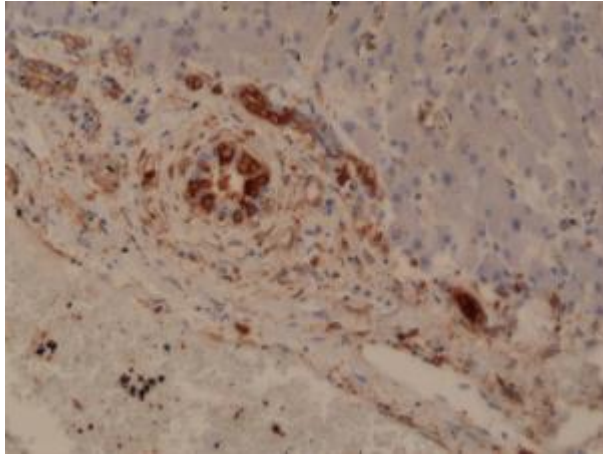
SPECIES REACTIVITY: Human.

STORAGE CONDITIONS: Store at -20°C; Avoid repeated freeze / thaw cycles.

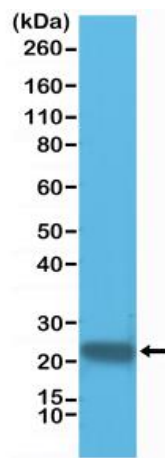
APPLICATIONS AND USAGE: IHC: 1:1000-1:20000.
Western Blot: 1:1000-1:2000.



Immunohistochemical staining of formalin fixed and paraffin embedded human Brain tissue section using anti-GSTP1 rabbit monoclonal antibody (Clone RM347) at a 1:20000 dilution.



Immunohistochemical staining of formalin fixed and paraffin embedded human Liver tissue section using anti-GSTP1 rabbit monoclonal antibody (Clone RM347) at a 1:20000 dilution.



Western Blot of HeLa cell lysate using anti-GSTP1 rabbit monoclonal antibody (Clone RM347) at a 1:1000 dilution.

RELATED PRODUCTS:

Anti-GST-Tag Antibody (4G4) (a1021)
Anti-GSTP1 Antibody (A1003)

FOR RESEARCH USE ONLY! Not to be used on humans.