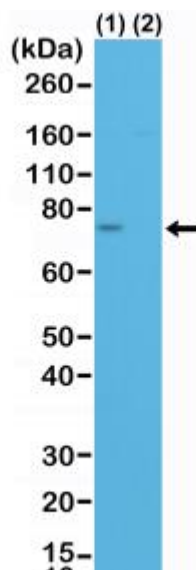


# Anti-Spastin Rabbit Monoclonal Antibody (RM346)

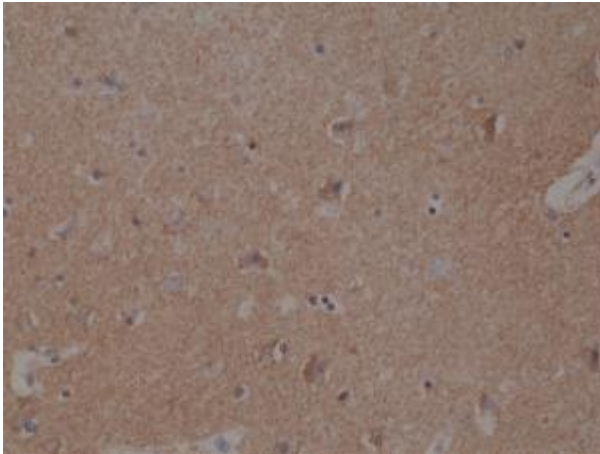
CATALOG NO.: A1855-50 50 µL.

**BACKGROUND DESCRIPTION:** ATP-dependent microtubule severing protein that specifically recognizes and cuts microtubules that are polyglutamylated. Preferentially recognizes and acts on microtubules decorated with short polyglutamate tails: severing activity increases as the number of glutamates per tubulin rises from one to eight, but decreases beyond this glutamylation threshold (PubMed:26875866). Severing activity is not dependent on tubulin acetylation or deetyrosination. Microtubule severing promotes reorganization of cellular microtubule arrays and the release of microtubules from the centrosome following nucleation. It is critical for the biogenesis and maintenance of complex microtubule arrays in axons, spindles and cilia. SPAST is involved in abscission step of cytokinesis and nuclear envelope reassembly during anaphase in cooperation with the ESCRT-III complex.

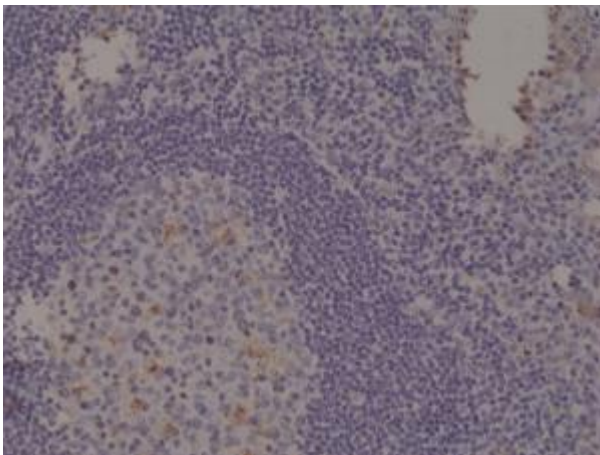
<b>ANTIBODY TYPE:</b>	Monoclonal
<b>CLONE:</b>	RM346
<b>HOST/ISOTYPE:</b>	Rabbit / Rabbit IgG.
<b>IMMUNOGEN:</b>	A peptide corresponding to the N-terminus of human Spastin.
<b>PURIFICATION:</b>	Protein A affinity purified from an animal origin-free culture supernatant.
<b>FORM:</b>	Liquid.
<b>FORMULATION:</b>	50% Glycerol/PBS with 1% BSA and 0.09% sodium azide
<b>SPECIES REACTIVITY:</b>	Human.
<b>STORAGE CONDITIONS:</b>	Store at -20°C; Avoid repeated freeze / thaw cycles.
<b>APPLICATIONS AND USAGE:</b>	Western Blot: 1:500-1:1000. IHC: 1:500-1:1000.



Western Blot of lysate from HeLa cells, transfected with Control siRNA (1) or Spastin siRNA, using anti-Spastin rabbit monoclonal antibody (Clone RM346) at a 1:500 dilution.



Immunohistochemical staining of formalin fixed and paraffin embedded human Brain tissue section using anti-Spastin rabbit monoclonal antibody (Clone RM346) at a 1:1000 dilution.



Immunohistochemical staining of formalin fixed and paraffin embedded human Tonsil tissue section using anti-Spastin rabbit monoclonal antibody (Clone RM346) at a 1:1000 dilution.

**RELATED PRODUCTS:**

Anti-MART1 Rabbit Monoclonal Antibody (RM333) (A1845)  
Anti-PSMA (Prostate specific membrane antigen) Rabbit Monoclonal Antibody (RM327) (A1841)  
Anti-Calretinin (CALB2) Rabbit Monoclonal Antibody (RM324) (A1839)

***FOR RESEARCH USE ONLY! Not to be used on humans.***