

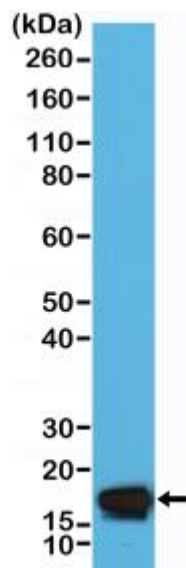
# Anti-Stathmin (STMN1) Rabbit Monoclonal Antibody (RM350)

08/19

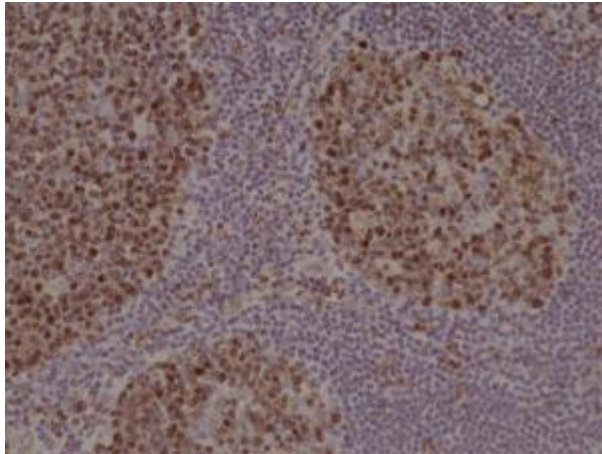
CATALOG NO.: A1856-50 50  $\mu$ L.

**BACKGROUND DESCRIPTION:** Stathmin (STMN1), a member of the stathmin family, is also known as Leukemia-associated phosphoprotein p18, Oncoprotein 18 (Op18), Phosphoprotein p19 (pp19), Protein Pr22 and pp17, which contains one SLD (stathmin-like) domain. The function of STMN1 as an important regulatory protein of microtubule dynamics has been well-characterized. Stathmin (STMN1) interacts with two molecules of dimeric  $\alpha$ , $\beta$ -tubulin to form a tight ternary complex called the T2S complex. One mole of STMN1 binds to two moles of tubulin dimers through the stathmin-like domain (SLD). When STMN1 sequesters tubulin into the T2S complex, tubulin becomes non-polymerizable. Without tubulin polymerization, there is no microtubule assembly. STMN1 also promotes microtubule disassembly by acting directly on the microtubule ends.

<b>ANTIBODY TYPE:</b>	Monoclonal
<b>CLONE:</b>	RM350
<b>HOST/ISOTYPE:</b>	Rabbit / Rabbit IgG.
<b>IMMUNOGEN:</b>	A peptide corresponding to C-terminus of human Stathmin.
<b>PURIFICATION:</b>	Protein A affinity purified from an animal origin-free culture supernatant.
<b>FORM:</b>	Liquid.
<b>FORMULATION:</b>	50% Glycerol/PBS with 1% BSA and 0.09% sodium azide
<b>SPECIES REACTIVITY:</b>	Human.
<b>STORAGE CONDITIONS:</b>	Store at -20°C; Avoid repeated freeze / thaw cycles.
<b>APPLICATIONS AND USAGE:</b>	Western Blot: 1:2000-1:5000. IHC: 1:500-1:1000.



Western Blot of HeLa cell lysate using anti-Stathmin rabbit monoclonal antibody (Clone RM350) at a 1:5000 dilution.



Immunohistochemical staining of formalin fixed and paraffin embedded human Tonsil tissue section using anti-Stathmin rabbit monoclonal antibody (Clone RM350) at a 1:1000 dilution.

**RELATED PRODUCTS:**

Human Stathmin 1 / STMN1 Protein (Cat# 7881).  
Tubulin Antibody (Cat. No. 3708)  
Beta3-Tubulin (TUJ-1) Antibody (3525)

***FOR RESEARCH USE ONLY! Not to be used on humans.***