

Anti-KRT20 Antibody

CATALOG NO.: A1859-100 100 µl.

BACKGROUND DESCRIPTION: The protein encoded by this gene is a member of the keratin family. The keratins are intermediate filament proteins responsible for the structural integrity of epithelial cells and are subdivided into cytokeratins and hair keratins. The type I cytokeratins consist of acidic proteins which are arranged in pairs of heterotypic keratin chains. This cytokeratin is a major cellular protein of mature enterocytes and goblet cells and is specifically expressed in the gastric and intestinal mucosa. The type I cytokeratin genes are clustered in a region of chromosome 17q12-q21.

ALTERNATE NAMES: CK20.
K20.
KRT20.
keratin20.
KRT21.
CK-20.
CD20.

ANTIBODY TYPE: Polyclonal

HOST/ISOTYPE: Rabbit / Rabbit IgG.

IMMUNOGEN: Recombinant fusion protein containing a sequence corresponding to amino acids 245-424 of human KRT20 (NP_061883.1).

PURIFICATION: Affinity purification.

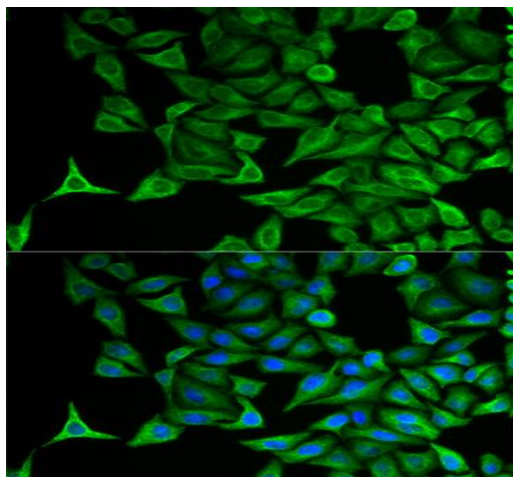
FORM: Liquid.

FORMULATION: Buffer: PBS with 0.02% sodium azide, 50% glycerol, pH7.3.

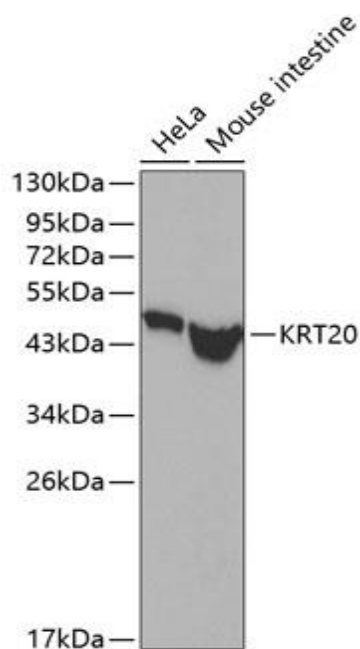
SPECIES REACTIVITY: Rat.
Mouse.
Human.

STORAGE CONDITIONS: Store at -20°C;. Avoid freeze / thaw cycles.

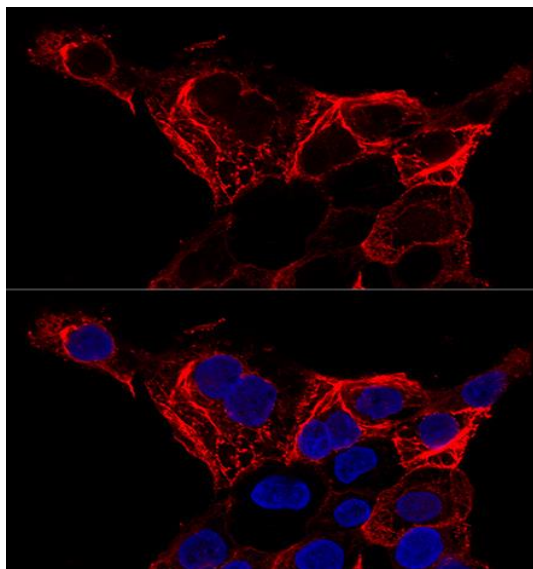
APPLICATIONS AND USAGE: WB 1:500 - 1:2000.
IHC 1:50 - 1:200.
IF 1:50 - 1:200.



Immunofluorescence analysis of HeLa cells using KRT20 antibody. Blue: DAPI for nuclear staining.



Western blot analysis of extracts of various cell lines, using KRT20 antibody. Secondary antibody: HRP Goat Anti-Rabbit IgG (H+L) at 1:10000 dilution. Lysates/proteins: 25ug per lane. Blocking buffer: 3% nonfat dry milk in TBST.



Confocal immunofluorescence analysis of A-431 cells using KRT20 antibody at dilution of 1:200. Blue: DAPI for nuclear staining.

RELATED PRODUCTS:

- Anti-Cytokeratin-8 Rabbit Monoclonal Antibody (A1608)
- Anti-Cytokeratin 18 Antibody (IHC018) (A1499)
- Anti-Cytokeratin 14 Antibody (IHC555) (A1498)
- Anti-Cytokeratin 5, Rabbit Monoclonal Antibody (A1136)
- Anti-CK-13 Antibody (A1707)

FOR RESEARCH USE ONLY! Not to be used on humans.