

# Anti-PGR Antibody

**CATALOG NO.:** A1860-100 100 µl.

**BACKGROUND DESCRIPTION:** This gene encodes a member of the steroid receptor superfamily. The encoded protein mediates the physiological effects of progesterone, which plays a central role in reproductive events associated with the establishment and maintenance of pregnancy. This gene uses two distinct promoters and translation start sites in the first exon to produce several transcript variants, both protein coding and non-protein coding. Two of the isoforms (A and B) are identical except for an additional 165 amino acids found in the N-terminus of isoform B and mediate their own response genes and physiologic effects with little overlap.

**ALTERNATE NAMES:** NR3C3.  
PR.  
progesterone receptor.  
PGR.

**ANTIBODY TYPE:** Polyclonal

**HOST/ISOTYPE:** Rabbit / Rabbit IgG.

**IMMUNOGEN:** Recombinant fusion protein containing a sequence corresponding to amino acids 1-250 of human PGR (NP\_000917.3)..

**PURIFICATION:** Affinity purification.

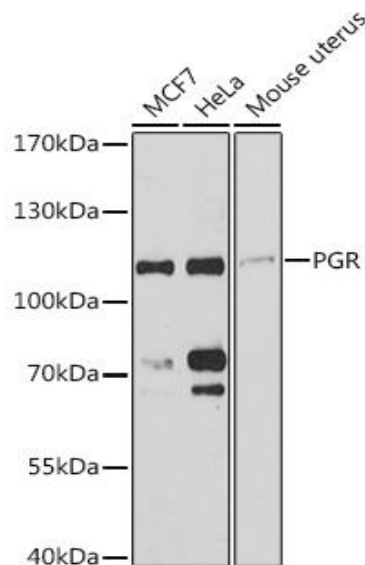
**FORM:** Liquid.

**FORMULATION:** Buffer: PBS with 0.02% sodium azide, 50% glycerol, pH7.3.

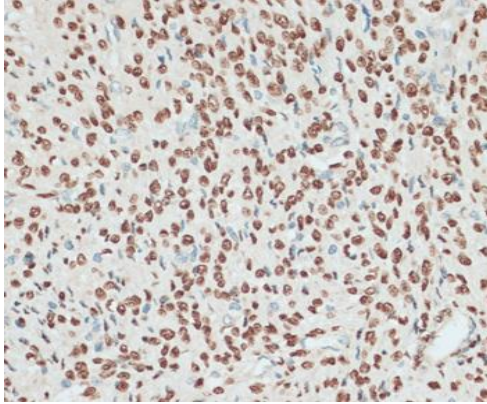
**SPECIES REACTIVITY:** Rat.  
Mouse.  
Human.

**STORAGE CONDITIONS:** Store at -20°C;. Avoid repeated freeze / thaw cycles.

**APPLICATIONS AND USAGE:** WB 1:500 - 1:2000.  
IHC 1:50 - 1:100.



Western blot analysis of extracts of various cell lines, using PGR antibody at 1:3000 dilution. Secondary antibody: HRP Goat Anti-Rabbit IgG (H+L) at 1:10000 dilution. Lysates/proteins: 25ug per lane. Blocking buffer: 3% nonfat dry milk in TBST. Detection: ECL Enhanced Kit. Exposure time: 90s.



Immunohistochemistry of paraffin-embedded human uterus using PGR antibody at dilution of 1:100 (40x lens).

**RELATED PRODUCTS:**

- Progesterone receptor (PGR) (Human) ELISA Kit (Cat# K4270).
- Progesterone (2903)
- Progesterone ELISA Kit (K7416)

***FOR RESEARCH USE ONLY! Not to be used on humans.***