

Anti-ERBB4 Antibody

CATALOG NO.: A1862-100 100 µl.

BACKGROUND DESCRIPTION: This gene is a member of the Tyr protein kinase family and the epidermal growth factor receptor subfamily. It encodes a single-pass type I membrane protein with multiple cysteine rich domains, a transmembrane domain, a tyrosine kinase domain, a phosphatidylinositol-3 kinase binding site and a PDZ domain binding motif. The protein binds to and is activated by neuregulins and other factors and induces a variety of cellular responses including mitogenesis and differentiation. Multiple proteolytic events allow for the release of a cytoplasmic fragment and an extracellular fragment. Mutations in this gene have been associated with cancer. Alternatively spliced variants which encode different protein isoforms have been described; however, not all variants have been fully characterized.

ALTERNATE NAMES: HER4, ALS19, p180erbB4, ERBB4, erb-b2 receptor tyrosine kinase 4.

ANTIBODY TYPE: Polyclonal

HOST/ISOTYPE: Rabbit / Rabbit IgG.

IMMUNOGEN: A synthetic peptide corresponding to a sequence within amino acids 1150-1250 of human ERBB4 (NP_005226.1).

PURIFICATION: Affinity purification.

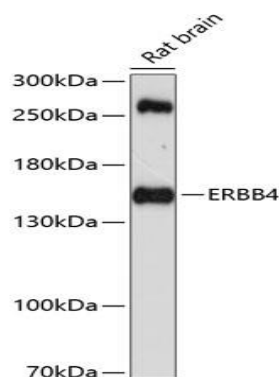
FORM: Liquid.

FORMULATION: Buffer: PBS with 0.02% sodium azide, 50% glycerol, pH7.3.

SPECIES REACTIVITY: Rat.
Human.

STORAGE CONDITIONS: Store at -20°C; Avoid freeze / thaw cycles.

APPLICATIONS AND USAGE: WB 1:500 - 1:2000.



Western blot analysis of extracts of rat brain, using ERBB4 antibody at 1:1000 dilution. Secondary antibody: HRP Goat Anti-Rabbit IgG (H+L) at 1:10000 dilution. Lysates/proteins: 25µg per lane. Blocking buffer: 3% nonfat dry milk in TBST. Detection: ECL Basic Kit. Exposure time: 90s.

RELATED PRODUCTS:

- EGFR Antibody (3782)
- Anti-HER2 (c-erbB-2), Rabbit Monoclonal Antibody(A1134)

FOR RESEARCH USE ONLY! Not to be used on humans.