

Anti-ERBB3 Antibody

CATALOG NO.: A1863-100 100 µl.

BACKGROUND DESCRIPTION: This gene encodes a member of the epidermal growth factor receptor (EGFR) family of receptor tyrosine kinases. This membrane-bound protein has a neuregulin binding domain but not an active kinase domain. It therefore can bind this ligand but not convey the signal into the cell through protein phosphorylation. However, it does form heterodimers with other EGF receptor family members which do have kinase activity. Heterodimerization leads to the activation of pathways which lead to cell proliferation or differentiation. Amplification of this gene and/or overexpression of its protein have been reported in numerous cancers, including prostate, bladder, and breast tumors. Alternate transcriptional splice variants encoding different isoforms have been characterized. One isoform lacks the intermembrane region and is secreted outside the cell. This form acts to modulate the activity of the membrane-bound form. Additional splice variants have also been reported, but they have not been thoroughly characterized.

ALTERNATE NAMES: ErbB-3, ERBB3, c-erbB-3, MDA-BF-1, c-erbB3.

ANTIBODY TYPE: Polyclonal

HOST/ISOTYPE: Rabbit / Rabbit IgG.

IMMUNOGEN: Recombinant fusion protein containing a sequence corresponding to amino acids 20-285 of human ERBB3 (NP_001973.2).

PURIFICATION: Affinity purification.

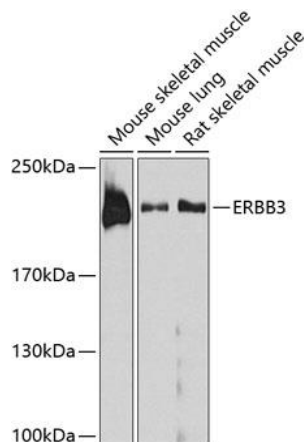
FORM: Liquid.

FORMULATION: Buffer: PBS with 0.02% sodium azide, 50% glycerol, pH7.3.

SPECIES REACTIVITY: Rat, Mouse, Human

STORAGE CONDITIONS: Store at -20 °C; Avoid freeze / thaw cycles.

APPLICATIONS AND USAGE: WB 1:500 - 1:2000.



Western blot analysis of extracts of various cell lines, using ERBB3 antibody at 1:1000 dilution. Secondary antibody: HRP Goat Anti-Rabbit IgG (H+L) at 1:10000 dilution. Lysates/proteins: 25µg per lane. Blocking buffer: 3% nonfat dry milk in TBST. Detection: ECL Basic Kit. Exposure time: 90s..

RELATED PRODUCTS:

- Anti- Her2/Neu Antibody (IHC002) (A1519)
- Anti-HER2 (Trastuzumab), humanized Antibody (A1046)
- Anti-HER2 (c-erbB-2), Rabbit Monoclonal Antibody (A1134)

FOR RESEARCH USE ONLY! Not to be used on humans.