

# Anti-PCK1 Antibody

**CATALOG NO.:** A1864-30T 30 µg.  
A1864-100 100 µg.

**BACKGROUND DESCRIPTION:** Phosphoenolpyruvate Carboxykinase (PCK1) belongs to the lyase family. In the presence of GTP, it catalyzes the reversible conversion of oxaloacetate (OAA) into phosphoenolpyruvate (PEP), GDP and CO<sub>2</sub>. In humans, two isoforms of PEPCK are found: cytosolic form (PCK1, also called PEPCK-C) and mitochondrial form (PEPCK-M). PCK1 is a control point enzyme which catalyzes a irreversible step in gluconeogenesis.

**ALTERNATE NAMES:** PEPCK, PEPCK-C.

**ANTIBODY TYPE:** Polyclonal

**CONCENTRATION:** 0.5 mg/ml

**HOST/ISOTYPE:** Rabbit / IgG.

**IMMUNOGEN:** Phosphoenolpyruvate Carboxykinase (PCK1), Human Recombinant (Cat. No. P1229) (R4).

**PURIFICATION:** Affinity purified.

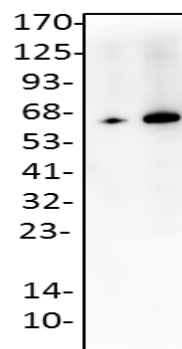
**FORM:** Liquid.

**FORMULATION:** In PBS, 30% glycerol, 0.5% BSA, 5 mM EDTA and 0.03% proclin, pH7.2

**SPECIES REACTIVITY:** Human.

**STORAGE CONDITIONS:** Store at -20°C. Avoid repeated freeze/thaw cycles.

## APPLICATIONS AND USAGE:



Western blot of human recombinant PCK1 using PCK1 antibody:

Lane 1: Human rec. PCK1 (10 ng)  
Lane 2: Human Rec. PCK1 (50 ng).

## RELATED PRODUCTS:

- ApoLipoprotein B Antibody (3661).
- ApoE3 Antibody (5696).
- Phosphoenolpyruvate Carboxykinase (PCK1), Human Recombinant (P1229).
- FATP4 Antibody (3268).

**FOR RESEARCH USE ONLY! Not to be used on humans.**