

Anti-TPD52 Antibody

CATALOG NO.: A1867-100 100 µl.

BACKGROUND DESCRIPTION: Tumor protein D52 is a protein encoded by the TPD52 gene. TPD52 is a survival factor in ERBB2-amplified breast cancer. TPD52 overexpression is associated with neoplasms.

ALTERNATE NAMES: TPD52, tumor protein D52,

ANTIBODY TYPE: Polyclonal

HOST/ISOTYPE: Rabbit / Rabbit IgG.

IMMUNOGEN: Recombinant fusion protein containing a sequence corresponding to amino acids 1-184 of human TPD52 (NP_005070.1).

PURIFICATION: Affinity purification.

FORM: Liquid.

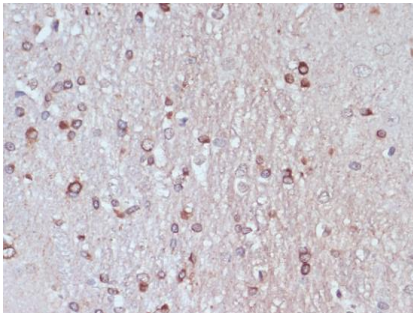
FORMULATION: Buffer: PBS with 0.02% sodium azide, 50% glycerol, pH7.3.

SPECIES REACTIVITY: Rat.
Mouse.
Human.

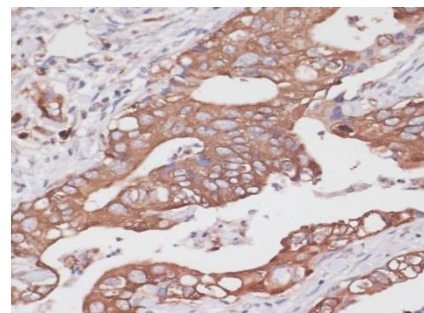
STORAGE CONDITIONS: Store at -20°C; Avoid freeze / thaw cycles.

APPLICATIONS AND USAGE: WB 1:1000 - 1:2000.
IHC 1:50 - 1:200.

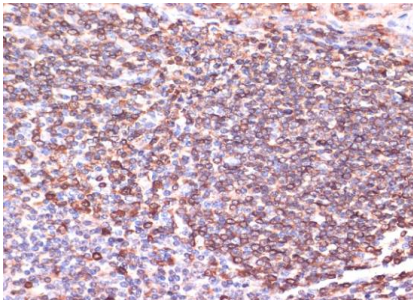
A



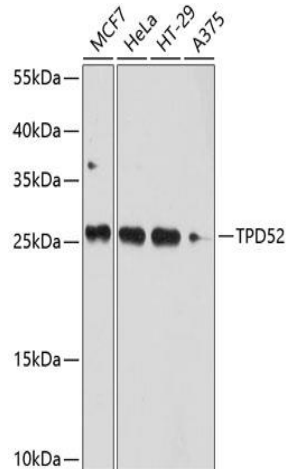
B



C



Immunohistochemistry of paraffin-embedded samples using TPD52 antibody at dilution of 1:100 (A) rat brain (B) human colon carcinoma (C) human tonsil.

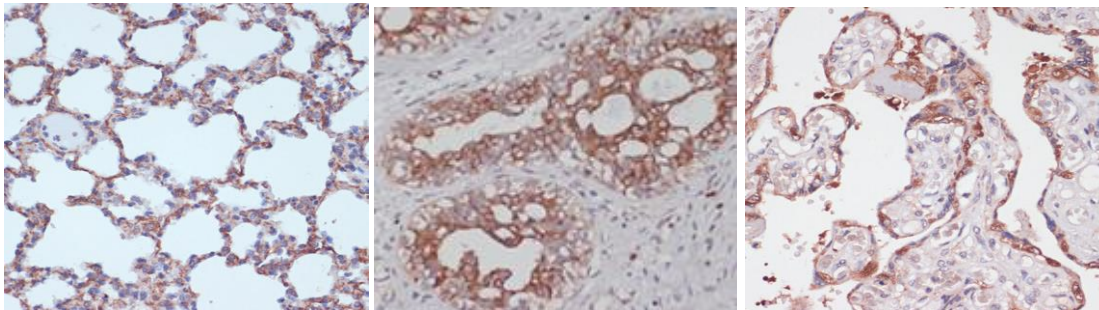


Western blot analysis of various cell lines lysates, using TPD52 antibody at 1:1000 dilution. Secondary antibody: HRP Goat Anti-Rabbit IgG (H+L) at 1:10000 dilution. Lysates/proteins: 25ug per lane. Blocking buffer: 3% nonfat dry milk in TBST. Detection: ECL Basic Kit. Exposure time: 10s.

A

B

C



Immunohistochemistry of paraffin-embedded samples using TPD52 antibody at dilution of 1:100 (A) rat lung (B) human mammary cancer (C) human placenta using TPD52 antibody

RELATED PRODUCTS:

- Anti-Beta-2 Microglobulin Antibody (B2M/961) (A1440)
- Anti-CA19-9 Antibody (121SLE) (A1451)
- Anti-BRCA1 Antibody (BRCA1/1398) (A1448)
- Anti-MUC16 Antibody (A1293)
- Anti-TFE3 Antibody (A1565)

FOR RESEARCH USE ONLY! Not to be used on humans.