

Anti-STRADA Antibody

CATALOG NO.: A1868-100 100 µl.

BACKGROUND DESCRIPTION: The protein encoded by this gene contains a STE20-like kinase domain, but lacks several residues that are critical for catalytic activity, so it is termed a 'pseudokinase'. The protein forms a heterotrimeric complex with serine/threonine kinase 11 (STK11, also known as LKB1) and the scaffolding protein calcium binding protein 39 (CAB39, also known as MO25). The protein activates STK11 leading to the phosphorylation of both proteins and excluding STK11 from the nucleus. The protein is necessary for STK11-induced G1 cell cycle arrest. A mutation in this gene has been shown to result in polyhydramnios, megalencephaly, and symptomatic epilepsy (PMSE) syndrome. Multiple transcript variants encoding different isoforms have been found for this gene. Additional transcript variants have been described but their full-length nature is not known.

ANTIBODY TYPE: Polyclonal

HOST/ISOTYPE: Rabbit / Rabbit IgG.

IMMUNOGEN: Recombinant fusion protein containing a sequence corresponding to amino acids 25-210 of human STRADA (NP_699166.2).

PURIFICATION: Affinity Purification.

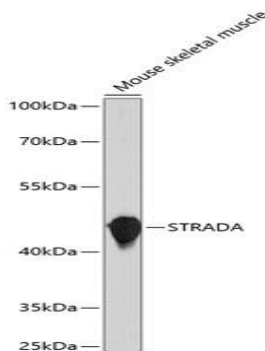
FORM: Liquid.

FORMULATION: Buffer: PBS with 0.02% sodium azide, 50% glycerol, pH7.3.

SPECIES REACTIVITY: Mouse.

STORAGE CONDITIONS: Store at -20°C; Avoid freeze / thaw cycles.

APPLICATIONS AND USAGE: WB 1:1000 - 1:2000.



Western blot analysis of extracts of Mouse skeletal muscle, using STRADA antibody at 1:1000 dilution. Secondary antibody: HRP Goat Anti-Rabbit IgG (H+L) at 1:10000 dilution. Lysates/proteins: 25ug per lane. Blocking buffer: 3% nonfat dry milk in TBST. Detection: ECL Basic Kit. Exposure time: 10s.

RELATED PRODUCTS:

- Anti-phospho-Akt (Ser473) Rabbit Monoclonal Antibody (A1119)
- Phospho-Akt1 (Ser246) Antibody (A1245)
- Phospho-Akt2 (Ser474) Antibody (A1246)

FOR RESEARCH USE ONLY! Not to be used on humans.