

Anti-BRINP1 Antibody

CATALOG NO.: A1874-100 100 µl.

BACKGROUND DESCRIPTION: This gene is located within a chromosomal region that shows loss of heterozygosity in some bladder cancers. It contains a 5' CpG island that may be a frequent target of hypermethylation, and it may undergo hypermethylation-based silencing in some bladder cancers.

ALTERNATE NAMES: DBCCR1, FAM5A, DBC1, BRINP1, BMP/retinoic acid inducible neural specific 1

ANTIBODY TYPE: Polyclonal

HOST/ISOTYPE: Rabbit / Rabbit IgG.

IMMUNOGEN: Recombinant fusion protein containing a sequence corresponding to amino acids 20-300 of human BRINP1 (NP_055433.2).

PURIFICATION: Affinity purification.

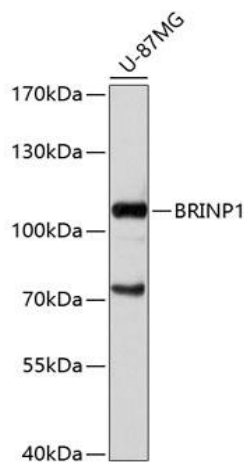
FORM: Liquid.

FORMULATION: Buffer: PBS with 0.02% sodium azide, 50% glycerol, pH7.3.

SPECIES REACTIVITY: Human.

STORAGE CONDITIONS: Store at -20°C; Avoid freeze / thaw cycles.

APPLICATIONS AND USAGE: WB 1:500 - 1:2000.



Western blot analysis of extracts of U-87MG cells, using BRINP1 antibody at 1:1000 dilution. Secondary antibody: HRP Goat Anti-Rabbit IgG (H+L) at 1:10000 dilution. Lysates/proteins: 25ug per lane. Blocking buffer: 3% nonfat dry milk in TBST. Detection: ECL Basic Kit. Exposure time: 1s.

RELATED PRODUCTS:

- HEC1 Antibody (3763)
- Choline Kinase B, Human Recombinant (P1220)

FOR RESEARCH USE ONLY! Not to be used on humans.