

# Anti-WT1 Antibody

**CATALOG NO.:** A1875-100 100 µl.

**BACKGROUND DESCRIPTION:** This gene encodes a transcription factor that contains four zinc-finger motifs at the C-terminus and a proline/glutamine-rich DNA-binding domain at the N-terminus. It has an essential role in the normal development of the urogenital system, and it is mutated in a small subset of patients with Wilms tumor. This gene exhibits complex tissue-specific and polymorphic imprinting pattern, with biallelic, and monoallelic expression from the maternal and paternal alleles in different tissues. Multiple transcript variants have been described. In several variants, there is evidence for the use of a non-AUG (CUG) translation initiation codon upstream of, and in-frame with the first AUG. There is evidence that WT1 mRNA undergoes RNA editing in human and rat, and that this process is tissue-restricted and developmentally regulated.

**ALTERNATE NAMES:** WIT-2, GUD, AWT1, Wilms tumor 1, NPHS4, EWS-WT1, WT1, WAGR, WT33

**ANTIBODY TYPE:** Polyclonal

**HOST/ISOTYPE:** Rabbit / Rabbit IgG.

**IMMUNOGEN:** Recombinant fusion protein containing a sequence corresponding to amino acids 1-302 of human WT1 (NP\_001185480.1).

**PURIFICATION:** Affinity purification.

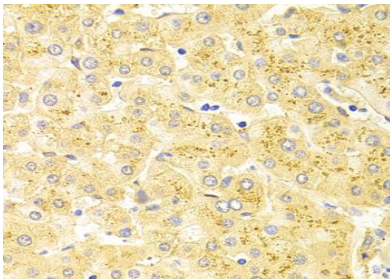
**FORM:** Liquid.

**FORMULATION:** Buffer: PBS with 0.02% sodium azide, 50% glycerol, pH7.3.

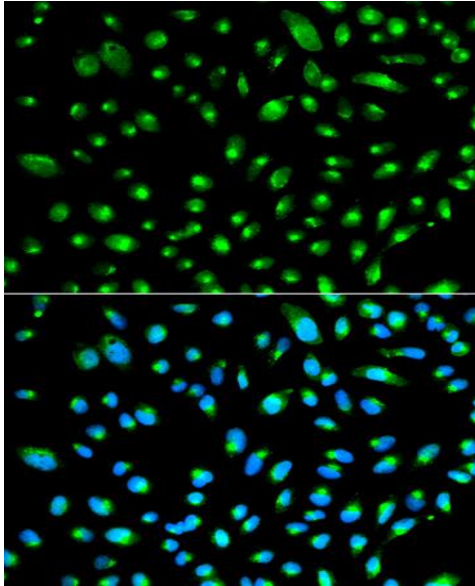
**SPECIES REACTIVITY:** Rat.  
 Mouse.  
 Human.

**STORAGE CONDITIONS:** Store at -20 °C; Avoid freeze / thaw cycles.

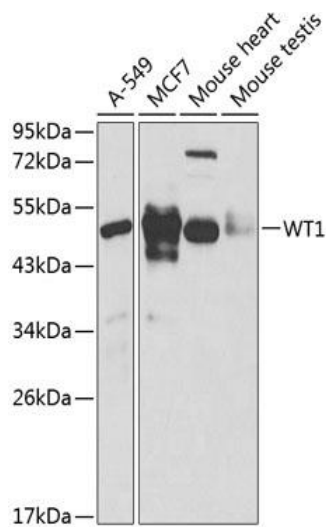
**APPLICATIONS AND USAGE:** IHC 1:50 - 1:200.  
 IF 1:50 - 1:200.  
 WB 1:500 - 1:2000.



Immunohistochemistry of paraffin-embedded human liver damage using WT1 antibody at dilution of 1:100 (40x lens).



Immunofluorescence analysis of HeLa cells using WT1 antibody. Blue: DAPI for nuclear staining.



Western blot analysis of extracts of various cell lines, using WT1 antibody at 1:1000 dilution. Secondary antibody: HRP Goat Anti-Rabbit IgG (H+L) at 1:10000 dilution. Lysates/proteins: 25ug per lane. Blocking buffer: 3% nonfat dry milk in TBST.

#### RELATED PRODUCTS:

- ZNF521 Antibody (NT) (5406)
- Anti-ZKSCAN5 Antibody (A1173)
- MTA1 Antibody (3799)
- LIMK2 Antibody (3584)

**FOR RESEARCH USE ONLY! Not to be used on humans.**