

Anti-SEL1L Antibody

CATALOG NO.: A1877-100 100 µl.

BACKGROUND DESCRIPTION: The protein encoded by this gene is part of a protein complex required for the retrotranslocation or dislocation of misfolded proteins from the endoplasmic reticulum lumen to the cytosol, where they are degraded by the proteasome in a ubiquitin-dependent manner. Alternatively spliced transcript variants encoding different isoforms have been found for this gene.

ALTERNATE NAMES: PRO1063, SEL1L1, SEL1L, SEL1-LIKE, protein sel-1 homolog 1.

ANTIBODY TYPE: Polyclonal

HOST/ISOTYPE: Rabbit / Rabbit IgG.

IMMUNOGEN: Recombinant fusion protein containing a sequence corresponding to amino acids 22-190 of human SEL1L (NP_005056.3).

PURIFICATION: Affinity purification.

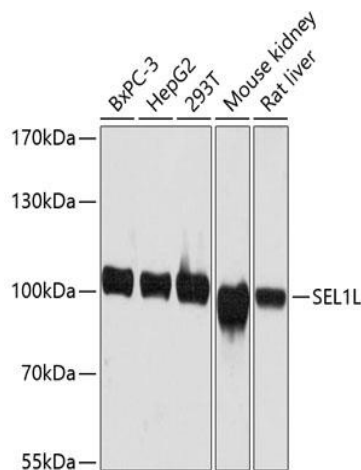
FORM: Liquid.

FORMULATION: Buffer: PBS with 0.02% sodium azide, 50% glycerol, pH7.3.

SPECIES REACTIVITY: Rat.
 Mouse.
 Human.

STORAGE CONDITIONS: Store at -20°C; Avoid freeze / thaw cycles.

APPLICATIONS AND USAGE: WB 1:500 - 1:2000.



Western blot analysis of extracts of various cell lines, using SEL1L antibody at 1:3000 dilution. Secondary antibody: HRP Goat Anti-Rabbit IgG (H+L) at 1:10000 dilution. Lysates/proteins: 25ug per lane. Blocking buffer: 3% nonfat dry milk in TBST. Detection: ECL Basic Kit. Exposure time: 20s.

RELATED PRODUCTS:

- Anti-Ubiquitin Antibody (A1702)
- Anti-USP37 Antibody (A1189)
- Anti-UBE2G1 Antibody (A1190)
- USP4 Antibody (6131)

FOR RESEARCH USE ONLY! Not to be used on humans.