

# Anti-RAB25 Antibody

**CATALOG NO.:** A1882-100 100 µl.

**BACKGROUND DESCRIPTION:** The protein encoded by this gene is a member of the RAS superfamily of small GTPases. The encoded protein is involved in membrane trafficking and cell survival. This gene has been found to be a tumor suppressor and an oncogene, depending on the context. Two variants, one protein-coding and the other not, have been found for this gene.

**ALTERNATE NAMES:** CATX-8, RAB11C, ras-related protein Rab-25, RAB25

**ANTIBODY TYPE:** Polyclonal

**HOST/ISOTYPE:** Rabbit / Rabbit IgG.

**IMMUNOGEN:** Recombinant fusion protein containing a sequence corresponding to amino acids 1-213 of human RAB25 (NP\_065120.2).

**PURIFICATION:** Affinity purification.

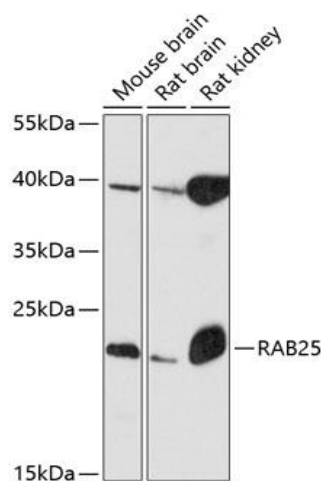
**FORM:** RAB25.

**FORMULATION:** Buffer: PBS with 0.02% sodium azide, 50% glycerol, pH7.3.

**SPECIES REACTIVITY:** Rat.  
Mouse.

**STORAGE CONDITIONS:** Store at -20°C; Avoid freeze / thaw cycles.

**APPLICATIONS AND USAGE:** WB 1:500 - 1:2000.



Western blot analysis of extracts of various cell lines, using RAB25 antibody at 1:3000 dilution. Secondary antibody: HRP Goat Anti-Rabbit IgG (H+L) at 1:10000 dilution. Lysates/proteins: 25ug per lane. Blocking buffer: 3% nonfat dry milk in TBST. Detection: ECL Basic Kit. Exposure time: 90s.

**RELATED PRODUCTS:**

- RasGAP Antibody (3311)
- Rab5 Antibody (3483)
- Raf1 Antibody (3116)

**FOR RESEARCH USE ONLY! Not to be used on humans.**