

Anti-ENO2 Antibody

CATALOG NO.: A1883-100 100 µl.

BACKGROUND DESCRIPTION: This gene encodes one of the three enolase isoenzymes found in mammals. This isoenzyme, a homodimer, is found in mature neurons and cells of neuronal origin. A switch from alpha enolase to gamma enolase occurs in neural tissue during development in rats and primates.

ALTERNATE NAMES: ENO2, HEL-S-279, enolase 2, NSE

ANTIBODY TYPE: Polyclonal

HOST/ISOTYPE: Rabbit / Rabbit IgG.

IMMUNOGEN: Recombinant fusion protein containing a sequence corresponding to amino acids 195-434 of human ENO2 (NP_001966.1).

PURIFICATION: Affinity purification.

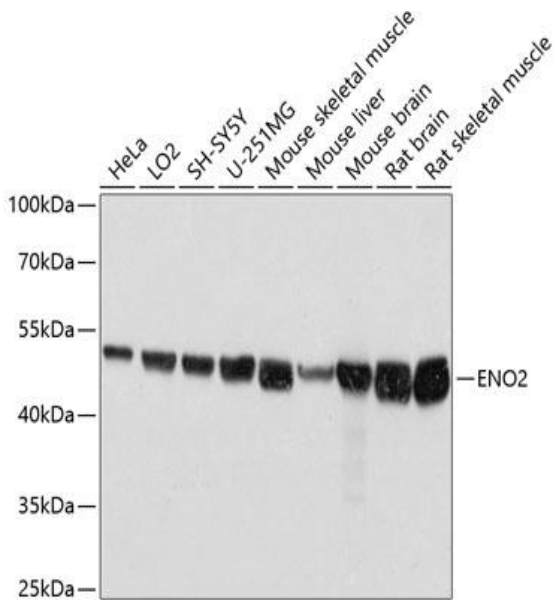
FORM: Liquid.

FORMULATION: Buffer: PBS with 0.02% sodium azide, 50% glycerol, pH7.3.

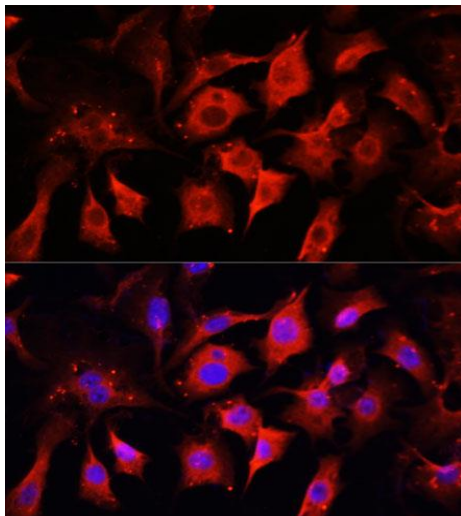
SPECIES REACTIVITY: Rat.
Mouse.
Human.

STORAGE CONDITIONS: Store at -20°C; Avoid freeze / thaw cycles.

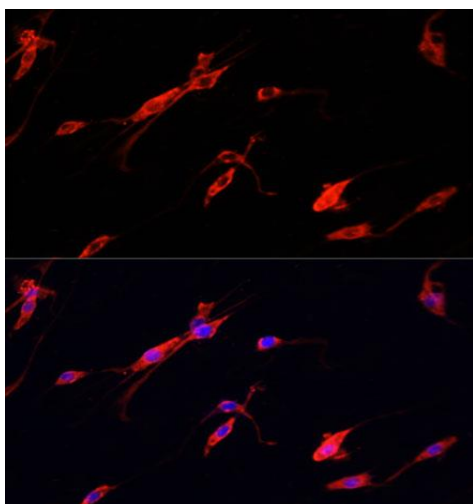
APPLICATIONS AND USAGE: WB 1:500 - 1:2000.
IF 1:50 - 1:200.



Western blot analysis of extracts of various cell lines, using ENO2 antibody at 1:3000 dilution. Secondary antibody: HRP Goat Anti-Rabbit IgG (H+L) at 1:10000 dilution. Lysates/proteins: 25ug per lane. Blocking buffer: 3% nonfat dry milk in TBST. Detection: ECL Basic Kit. Exposure time: 1s.



Immunofluorescence analysis of NIH/3T3 cells using ENO2 antibody at dilution of 1:100. Blue: DAPI for nuclear staining.



Immunofluorescence analysis of PC12 cells using ENO2 antibody at dilution of 1:100. Blue: DAPI for nuclear staining.

RELATED PRODUCTS:

- Human Recombinant Alpha-Enolase (6363)
- Human Recombinant Beta-Enolase (6364)
- Neuron Specific Enolase ELISA Kit (E4703)

FOR RESEARCH USE ONLY! Not to be used on humans.