

# Anti-GPC3 Antibody

**CATALOG NO.:** A1884-100 100 µl.

**BACKGROUND DESCRIPTION:** Cell surface heparan sulfate proteoglycans are composed of a membrane-associated protein core substituted with a variable number of heparan sulfate chains. Members of the glypican-related integral membrane proteoglycan family (GRIPS) contain a core protein anchored to the cytoplasmic membrane via a glycosyl phosphatidylinositol linkage. These proteins may play a role in the control of cell division and growth regulation. The protein encoded by this gene can bind to and inhibit the dipeptidyl peptidase activity of CD26, and it can induce apoptosis in certain cell types. Deletion mutations in this gene are associated with Simpson-Golabi-Behmel syndrome, also known as Simpson dysmorphia syndrome. Alternative splicing results in multiple transcript variants.

**ALTERNATE NAMES:** GPC3, SGBS, GTR2-2, DGSX, OCI-5, glypican-3, MXR7, SDYS, SGBS1, SGB

**ANTIBODY TYPE:** Polyclonal

**HOST/ISOTYPE:** Rabbit / Rabbit IgG.

**IMMUNOGEN:** Recombinant fusion protein containing a sequence corresponding to amino acids 290-550 of human GPC3 (NP\_004475.1).

**PURIFICATION:** Affinity purification.

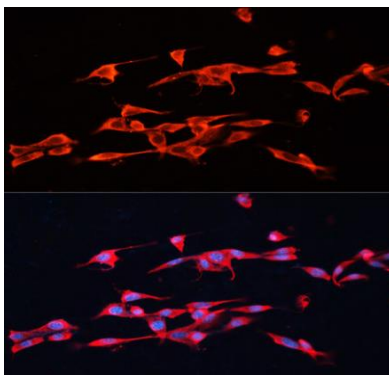
**FORM:** Liquid.

**FORMULATION:** Buffer: PBS with 0.02% sodium azide, 50% glycerol, pH7.3.

**SPECIES REACTIVITY:** Rat, Mouse, Human

**STORAGE CONDITIONS:** Store at -20 °C; Avoid freeze / thaw cycles.

**APPLICATIONS AND USAGE:** WB 1:500 - 1:2000.  
IF 1:50 - 1:200.



Immunofluorescence analysis of NIH/3T3 cells using GPC3 antibody at dilution of 1:100. Blue: DAPI for nuclear staining.

## RELATED PRODUCTS:

- Human CellExp™ Glypican 3, Human recombinant (P1057)
- Human CellExp™ Glypican 3, Mouse Recombinant (P1177)
- Human CellExp™ Glypican 3, Cynomolgus recombinant (P1119)

**FOR RESEARCH USE ONLY! Not to be used on humans.**