

Anti-Elafin Antibody

CATALOG NO.: A1887-100 100 µl.

BACKGROUND DESCRIPTION: This gene encodes an elastase-specific inhibitor that functions as an antimicrobial peptide against Gram-positive and Gram-negative bacteria, and fungal pathogens. The protein contains a WAP-type four-disulfide core (WFDC) domain, and is thus a member of the WFDC domain family. Most WFDC gene members are localized to chromosome 20q12-q13 in two clusters: centromeric and telomeric. This gene belongs to the centromeric cluster. Expression of this gene is upregulated by bacterial lipopolysaccharides and cytokines.

ALTERNATE NAMES: WAP3, SKALP, WFDC14, PI3, cementoin, elafin, ESI

ANTIBODY TYPE: Polyclonal

HOST/ISOTYPE: Rabbit / Rabbit IgG.

IMMUNOGEN: Recombinant fusion protein containing a sequence corresponding to amino acids 23-117 of human PI3 (NP_002629.1).

PURIFICATION: Affinity purification.

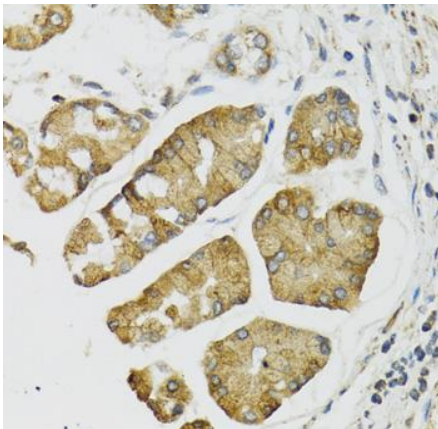
FORM: Liquid.

FORMULATION: Buffer: PBS with 0.02% sodium azide, 50% glycerol, pH 7.3.

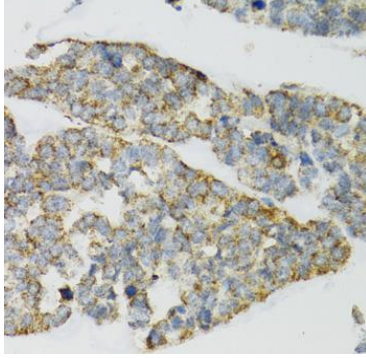
SPECIES REACTIVITY: Rat.
Human.

STORAGE CONDITIONS: Store at -20°C; Avoid freeze / thaw cycles.

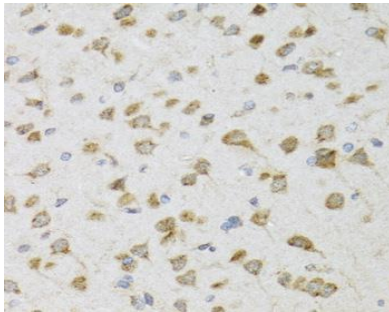
APPLICATIONS AND USAGE: IHC 1:50 - 1:200.



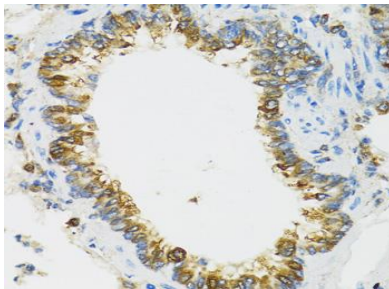
Immunohistochemistry of paraffin-embedded human esophagus using PI3 antibody at dilution of 1:100



Immunohistochemistry of paraffin-embedded human esophageal cancer using PI3 antibody at dilution of 1:100



Immunohistochemistry of paraffin-embedded rat brain using PI3 antibody at dilution of 1:100



Immunohistochemistry of paraffin-embedded rat lung using PI3 antibody at dilution of 1:100

RELATED PRODUCTS:

- Anti-ALOX5 Antibody (A1747)
- Anti-ANXA7 Antibody (A1750)
- Anti-APIP Antibody (A1766)
- Anti-APLP1 Antibody (A1749)

FOR RESEARCH USE ONLY! Not to be used on humans.