

Anti-WSB2 Antibody

CATALOG NO.: A1896-100 100 µl.

BACKGROUND DESCRIPTION: This gene encodes a member of the WD-protein subfamily. The encoded protein contains five WD-repeats spanning most of the protein and an SOCS box in the C-terminus. The SOCS box may act as a bridge between specific substrate-binding domains and E3 ubiquitin protein ligases. Three transcript variants encoding different isoforms have been found for this gene.

ALTERNATE NAMES: WSB2, SBA2, WD repeat and SOCS box containing 2

ANTIBODY TYPE: Polyclonal

HOST/ISOTYPE: Rabbit / Rabbit IgG.

IMMUNOGEN: Recombinant fusion protein containing a sequence corresponding to amino acids 1-200 of human WSB2 (NP_061109.1).

PURIFICATION: Affinity purification.

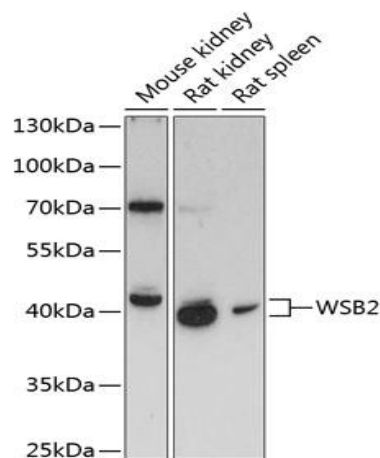
FORM: Liquid.

FORMULATION: Buffer: PBS with 0.02% sodium azide, 50% glycerol, pH7.3.

SPECIES REACTIVITY: Rat.
Mouse.

STORAGE CONDITIONS: Store at -20°C; Avoid freeze / thaw cycles.

APPLICATIONS AND USAGE: WB 1:500 - 1:2000.



RELATED PRODUCTS:

- SOCS1 Antibody (3861)
- SOCS1 Blocking Peptide (3861BP)
- Anti-TSHZ2 Antibody (A1171)
- C-Kit/CD117 Antibody (NT) (6777)

FOR RESEARCH USE ONLY! Not to be used on humans.