

Anti-CD44 Antibody

CATALOG NO.: A1910-100 100 µl.

BACKGROUND DESCRIPTION: The protein encoded by this gene is a cell-surface glycoprotein involved in cell-cell interactions, cell adhesion and migration. It is a receptor for hyaluronic acid (HA) and can also interact with other ligands, such as osteopontin, collagens, and matrix metalloproteinases (MMPs). This protein participates in a wide variety of cellular functions including lymphocyte activation, recirculation and homing, hematopoiesis, and tumor metastasis. Transcripts for this gene undergo complex alternative splicing that results in many functionally distinct isoforms, however, the full length nature of some of these variants has not been determined. Alternative splicing is the basis for the structural and functional diversity of this protein, and may be related to tumor metastasis.

ALTERNATE NAMES: MC56, LHR, HCELL, CD44 antigen, Pgp1, ECMR-III, MIC4, MDU2, CDW44, CD44, HUTCH-I, IN, CSPG8, MDU3

ANTIBODY TYPE: Polyclonal

HOST/ISOTYPE: Rabbit / Rabbit IgG.

IMMUNOGEN: Recombinant fusion protein containing a sequence corresponding to amino acids 35-300 of human CD44 (NP_001001389.1).

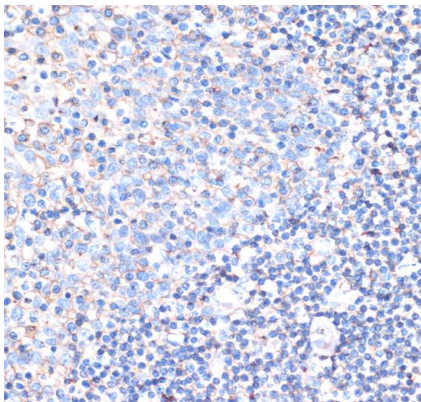
FORM: Liquid.

FORMULATION: Buffer: PBS with 0.02% sodium azide, 50% glycerol, pH7.3

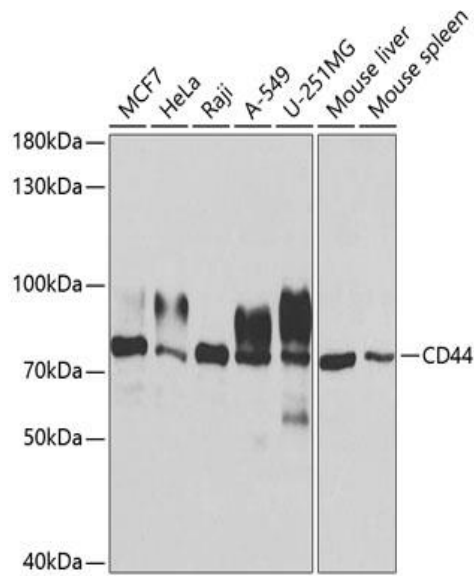
SPECIES REACTIVITY: Mouse.
Human.

STORAGE CONDITIONS: Store at -20°C; Avoid freeze / thaw cycles.

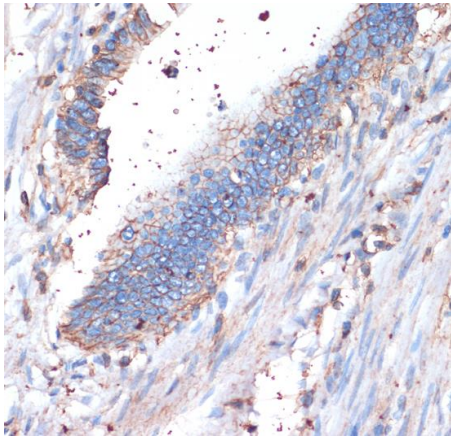
APPLICATIONS AND USAGE: IHC 1:50 - 1:200.
WB 1:500 - 1:2000.



Immunohistochemistry of paraffin-embedded human tonsil using CD44 antibody at dilution of 1:200 (40x lens).



Western blot analysis of extracts of various cell lines, using CD44 antibody at 1:1000 dilution. Secondary antibody: HRP Goat Anti-Rabbit IgG (H+L) at 1:10000 dilution. Lysates/proteins: 25ug per lane. Blocking buffer: 3% nonfat dry milk in TBST.



Immunohistochemistry of paraffin-embedded human colon carcinoma using CD44 antibody at dilution of 1:200 (40x lens).

RELATED PRODUCTS:

- Anti-human CD44 antibody (A1505)
- Anti-CD44 Antibody (Hermes-3) (A1078)
- Anti-CD44 Rabbit Monoclonal Antibody (A1592)
- CD44 (Human) ELISA Kit (K4178)

FOR RESEARCH USE ONLY! Not to be used on humans.