

Anti-TIMM17A Antibody

CATALOG NO.: A1911-100 100 µl.

BACKGROUND DESCRIPTION: Essential component of the TIM23 complex, a complex that mediates the translocation of transit peptide-containing proteins across the mitochondrial inner membrane.

ALTERNATE NAMES: TIMM17A, TIM17A, TIM17, translocase of inner mitochondrial membrane 17A

ANTIBODY TYPE: Polyclonal

HOST/ISOTYPE: Rabbit / Rabbit IgG.

IMMUNOGEN: Recombinant fusion protein containing a sequence corresponding to amino acids 1-171 of human TIMM17A (NP_006326.1).

PURIFICATION: Affinity purification.

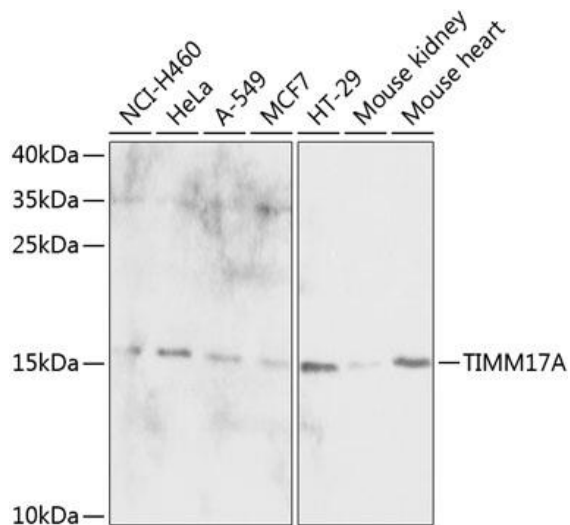
FORM: Liquid.

FORMULATION: Buffer: PBS with 0.02% sodium azide, 50% glycerol, pH7.3.

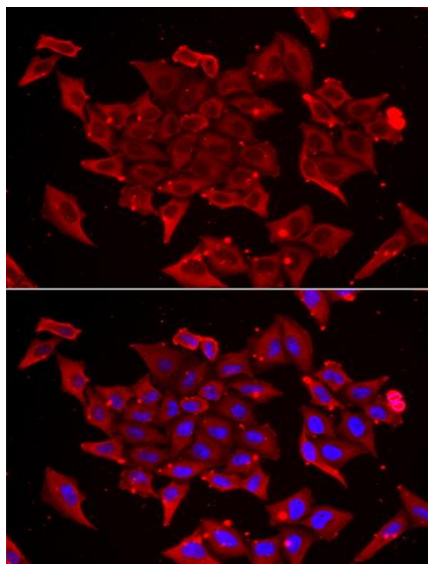
SPECIES REACTIVITY: Mouse.
Human.

STORAGE CONDITIONS: Store at -20°C; Avoid freeze / thaw cycles.

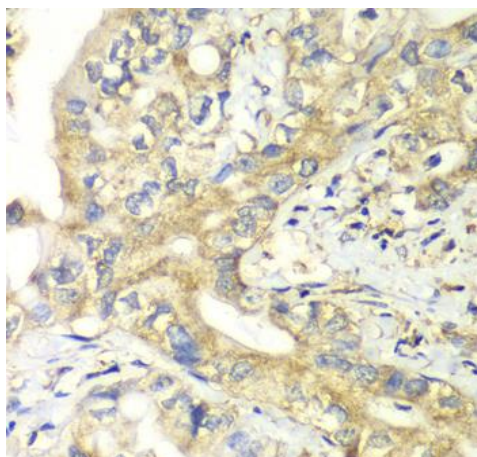
APPLICATIONS AND USAGE: IHC 1:50 - 1:200.
IF 1:50 - 1:200.
WB 1:500 - 1:2000.



Western blot analysis of extracts of various cell lines, using TIMM17A antibody at 1:1000 dilution. Secondary antibody: HRP Goat Anti-Rabbit IgG (H+L) at 1:10000 dilution. Lysates/proteins: 25µg per lane. Blocking buffer: 3% nonfat dry milk in TBST. Detection: ECL Basic Kit. Exposure time:30s.



Immunofluorescence analysis of U2OS cells using TIMM17A antibody. Blue: DAPI for nuclear staining.



Immunohistochemistry of paraffin-embedded human liver cancer using TIMM17A antibody at dilution of 1:100

RELATED PRODUCTS:

- Calreticulin Antibody (Clone S75) (3076)
- Calreticulin Antibody (3077)
- LAMP-1 Antibody (Center) (5077)
- Anti-human Caveolin-1 antibody (A1506)
- Calreticulin Antibody (Clone S75) (3076)

FOR RESEARCH USE ONLY! Not to be used on humans.