

Anti-CYP2W1 Antibody

CATALOG NO.: A1912-100 100 µl.

BACKGROUND DESCRIPTION: This gene encodes a member of the cytochrome P450 superfamily of enzymes. The cytochrome P450 proteins are monooxygenases which catalyze many reactions involved in drug metabolism and synthesis of cholesterol, steroids and other lipids.

ALTERNATE NAMES: CYP2W1, cytochrome P450 2W1

ANTIBODY TYPE: Polyclonal

HOST/ISOTYPE: Rabbit / Rabbit IgG.

IMMUNOGEN: Recombinant fusion protein containing a sequence corresponding to amino acids 141-490 of human CYP2W1 (NP_060251.2).

PURIFICATION: Affinity purification.

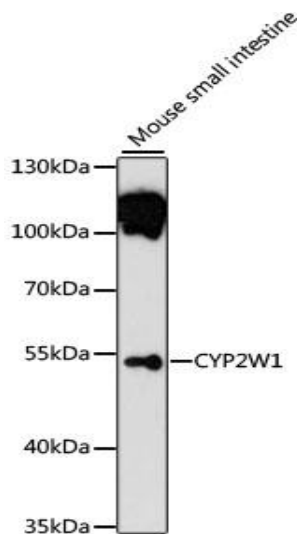
FORM: Liquid.

FORMULATION: Buffer: PBS with 0.02% sodium azide, 50% glycerol, pH7.3

SPECIES REACTIVITY: Mouse.

STORAGE CONDITIONS: Store at -20°C; Avoid freeze / thaw cycles.

APPLICATIONS AND USAGE: WB 1:500 - 1:2000.



Western blot analysis of extracts of mouse small intestine, using CYP2W1 antibody at 1:1000 dilution. Secondary antibody: HRP Goat Anti-Rabbit IgG (H+L) at 1:10000 dilution. Lysates/proteins: 25ug per lane. Blocking buffer: 3% nonfat dry milk in TBST. Detection: ECL Basic Kit. Exposure time: 90s.

RELATED PRODUCTS:

- Cytochrome c Antibody (3353)
- Cytochrome c Antibody (3025)
- Cytochrome P450 Antibody (3084R)
- Cytochrome c Antibody (3352)

FOR RESEARCH USE ONLY! Not to be used on humans.