

Anti-PRAME Antibody

CATALOG NO.: A1914-100 100 µl.

BACKGROUND DESCRIPTION: This gene encodes an antigen that is preferentially expressed in human melanomas and that is recognized by cytolytic T lymphocytes. It is not expressed in normal tissues, except testis. The encoded protein acts as a repressor of retinoic acid receptor, and likely confers a growth advantage to cancer cells via this function. Alternative splicing results in multiple transcript variants.

ALTERNATE NAMES: OIP4, preferentially expressed antigen in melanoma, CT130, PRAME, OIP-4, MAPE

ANTIBODY TYPE: Polyclonal

HOST/ISOTYPE: Rabbit / Rabbit IgG.

IMMUNOGEN: Recombinant fusion protein containing a sequence corresponding to amino acids 1-300 of human PRAME (NP_996839.1).

PURIFICATION: Affinity purification.

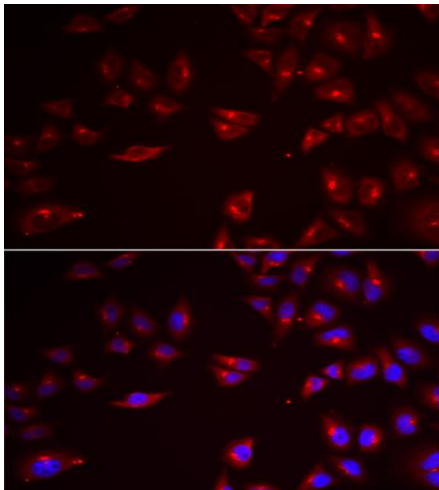
FORM: Liquid.

FORMULATION: Buffer: PBS with 0.02% sodium azide, 50% glycerol, pH7.3.

SPECIES REACTIVITY: Human.

STORAGE CONDITIONS: Store at -20°C; Avoid freeze / thaw cycles..

APPLICATIONS AND USAGE: WB 1:500 - 1:2000.
IF 1:20 - 1:50.



Immunofluorescence analysis of U2OS cells using PRAME antibody. Blue: DAPI for nuclear staining.

RELATED PRODUCTS:

Anti-Cytokeratin 18 Antibody (IHC018) (A1499)

Anti-Collagen-I Antibody (A1121)

Anti-EpCAM Monoclonal Antibody (Clone: ABM2C92) (A1538)

FOR RESEARCH USE ONLY! Not to be used on humans.