

Anti-S100P Antibody

CATALOG NO.: A1915-100 100 µl.

BACKGROUND DESCRIPTION: The protein encoded by this gene is a member of the S100 family of proteins containing 2 EF-hand calcium-binding motifs. S100 proteins are localized in the cytoplasm and/or nucleus of a wide range of cells, and involved in the regulation of a number of cellular processes such as cell cycle progression and differentiation. S100 genes include at least 13 members which are located as a cluster on chromosome 1q21; however, this gene is located at 4p16. This protein, in addition to binding Ca²⁺, also binds Zn²⁺ and Mg²⁺. This protein may play a role in the etiology of prostate cancer.

ALTERNATE NAMES: MIG9, S100P, protein S100-P

ANTIBODY TYPE: Polyclonal

HOST/ISOTYPE: Rabbit / Rabbit IgG.

IMMUNOGEN: A synthetic peptide corresponding to a sequence within amino acids 1-95 of human S100P (NP_005971.1).

PURIFICATION: Affinity purification.

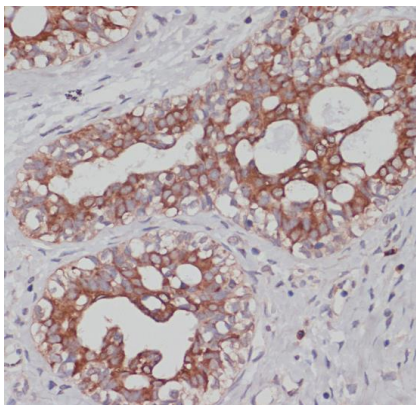
FORM: Liquid.

FORMULATION: Buffer: PBS with 0.02% sodium azide, 50% glycerol, pH7.3.

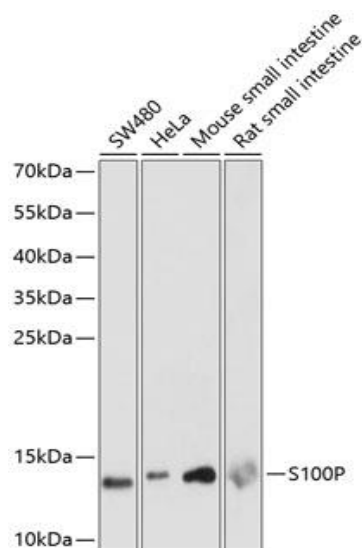
SPECIES REACTIVITY: Rat.
Mouse.
Human.

STORAGE CONDITIONS: Store at -20°C; Avoid freeze / thaw cycles.

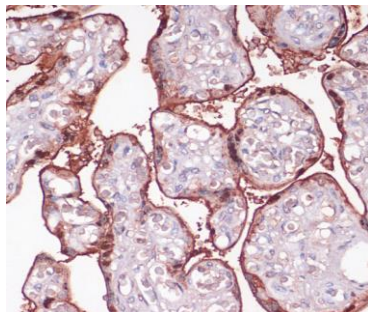
APPLICATIONS AND USAGE: IHC 1:100 - 1:200.
WB 1:500 - 1:2000.



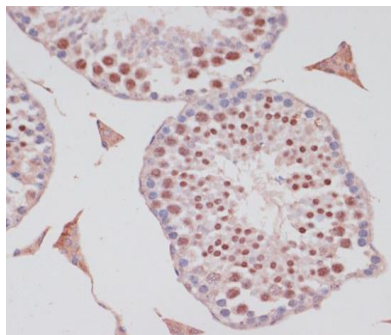
Immunohistochemistry of paraffin-embedded human colon carcinoma using S100P antibody at dilution of 1:100 (40x lens).



Western blot analysis of extracts of various cell lines, using S100P antibody at 1:1000 dilution. Secondary antibody: HRP Goat Anti-Rabbit IgG (H+L) at 1:10000 dilution. Lysates/proteins: 25ug per lane. Blocking buffer: 3% nonfat dry milk in TBST. Detection: ECL Enhanced Kit. Exposure time: 90s.



Immunohistochemistry of paraffin-embedded human placenta using S100P antibody at dilution of 1:100 (40x lens).



Immunohistochemistry of paraffin-embedded mouse testis using S100P antibody at dilution of 1:100 (40x lens).

RELATED PRODUCTS:

- Cadherin Antibody (3365R)
- Anti-K Cadherin Antibody (A1412)
- Anti-CD144 (VE-Cadherin) Antibody (A1148)
- S100A8 Antibody (Clone IMG48M7C7) (6196)
- Anti-S100A4 Antibody (A1704)

FOR RESEARCH USE ONLY! Not to be used on humans.