

Anti-LDHC Antibody

CATALOG NO.: A1917-100 100 µl.

BACKGROUND DESCRIPTION: Lactate dehydrogenase C catalyzes the conversion of L-lactate and NAD to pyruvate and NADH in the final step of anaerobic glycolysis. LDHC is testis-specific and belongs to the lactate dehydrogenase family. Two transcript variants have been detected which differ in the 5' untranslated region.

ALTERNATE NAMES: LDHX, LDH3, lactate dehydrogenase C, CT32, LDHC

ANTIBODY TYPE: Polyclonal

HOST/ISOTYPE: Rabbit / Rabbit IgG.

IMMUNOGEN: A synthetic peptide corresponding to a sequence within amino acids 150-250 of human LDHC (NP_002292.1).

PURIFICATION: Affinity purification.

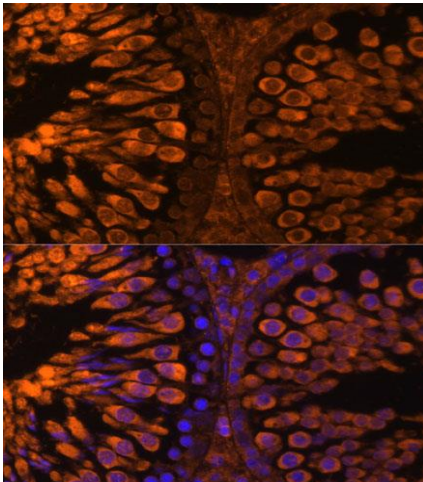
FORM: Liquid.

FORMULATION: Buffer: PBS with 0.02% sodium azide, 50% glycerol, pH7.3.

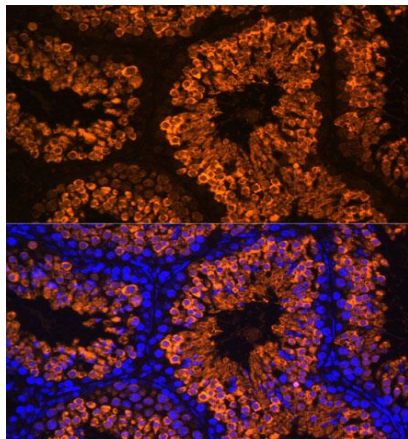
SPECIES REACTIVITY:
 Rat.
 Mouse.
 Human.

STORAGE CONDITIONS: Store at -20°C; Avoid freeze / thaw cycles.

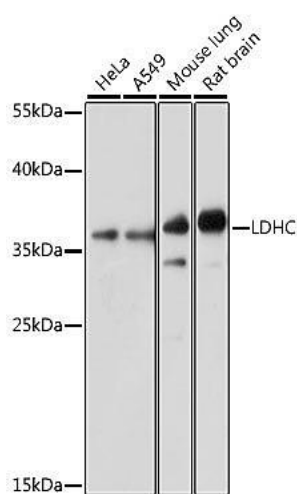
APPLICATIONS AND USAGE:
 IF 1:50 - 1:100.
 WB 1:500 - 1:2000.



Immunofluorescence analysis of rat testis using LDHC Polyclonal Antibody at dilution of 1:100. Blue: DAPI for nuclear staining.



Immunofluorescence analysis of mouse testis using LDHC Polyclonal Antibody at dilution of 1:100. Blue: DAPI for nuclear staining.



Western blot analysis of extracts of various cell lines, using LDHC antibody at 1:1000 dilution. Secondary antibody: HRP Goat Anti-Rabbit IgG (H+L) at 1:10000 dilution. Lysates/proteins: 25ug per lane. Blocking buffer: 3% nonfat dry milk in TBST. Detection: ECL Basic Kit. Exposure time: 30s.

RELATED PRODUCTS:

- LDH Antibody (3842)
- LDHA Antibody (CT) (6735)
- LDHA Antibody (Center) (6736)
- Human Recombinant LDHA (6374)
- Human Recombinant LDHB (6375)

FOR RESEARCH USE ONLY! Not to be used on humans.