

# Anti-SIM2 Antibody

**CATALOG NO.:** A1918-100 100 µl.

**BACKGROUND DESCRIPTION:** This gene represents a homolog of the *Drosophila* single-minded (*sim*) gene, which encodes a transcription factor that is a master regulator of neurogenesis. The encoded protein is ubiquitinated by RING-IBR-RING-type E3 ubiquitin ligases, including the parkin RBR E3 ubiquitin protein ligase. This gene maps within the so-called Down syndrome chromosomal region, and is thus thought to contribute to some specific Down syndrome phenotypes. Alternative splicing of this gene results in multiple transcript variants.

**ALTERNATE NAMES:** HMC13F06, HMC29C01, SIM2, single-minded homolog 2, bHLHe15, SIM

**ANTIBODY TYPE:** Polyclonal

**HOST/ISOTYPE:** Rabbit / Rabbit IgG.

**IMMUNOGEN:** Recombinant fusion protein containing a sequence corresponding to amino acids 342-525 of human SIM2 (NP\_033664.2).

**PURIFICATION:** Affinity purification.

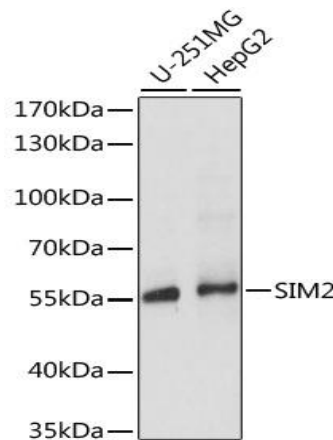
**FORM:** Liquid.

**FORMULATION:** Buffer: PBS with 0.02% sodium azide, 50% glycerol, pH7.3.

**SPECIES REACTIVITY:** Human.

**STORAGE CONDITIONS:** Store at -20°C; Avoid freeze / thaw cycles.

**APPLICATIONS AND USAGE:** WB 1:500 - 1:2000.



Western blot analysis of extracts of various cell lines, using SIM2 antibody at 1:1000 dilution. Secondary antibody: HRP Goat Anti-Rabbit IgG (H+L) at 1:10000 dilution. Lysates/proteins: 25ug per lane. Blocking buffer: 3% nonfat dry milk in TBST. Detection: ECL Basic Kit. Exposure time: 5s.

## RELATED PRODUCTS:

Anti-MEF2C Antibody (a1006)  
 Erk5 Antibody (3397)  
 HDAC7 Antibody (3607)

**FOR RESEARCH USE ONLY! Not to be used on humans.**