

Anti-RPH3AL Antibody

CATALOG NO.: A1933-100 100 µl.

BACKGROUND DESCRIPTION: The protein encoded by this gene plays a direct regulatory role in calcium-ion-dependent exocytosis in both endocrine and exocrine cells and plays a key role in insulin secretion by pancreatic cells. This gene is likely a tumor suppressor. Alternative splicing results in multiple transcript variants encoding distinct isoforms.

ALTERNATE NAMES: RPH3AL; NOC2; rab effector Noc2

ANTIBODY TYPE: Polyclonal

HOST/ISOTYPE: Rabbit / IgG

IMMUNOGEN: Recombinant fusion protein corresponding to aa 161-315 of human RPH3AL (NP_008918.1)

MOLECULAR WEIGHT: 45kDa

PURIFICATION: Affinity purification

FORM: Liquid

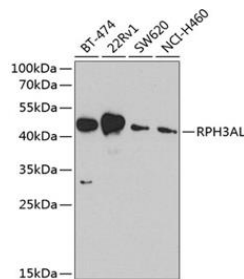
FORMULATION: In PBS with 0.02% sodium azide, 50% glycerol, pH7.3

SPECIES REACTIVITY: Human

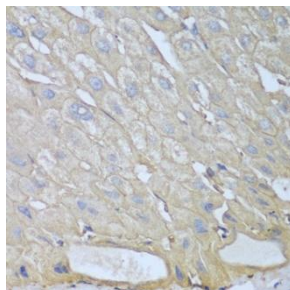
STORAGE CONDITIONS: Store at -20°C. Avoid freeze / thaw cycles

APPLICATIONS AND USAGE: WB 1:500 - 1:2000; IHC 1:50 - 1:100

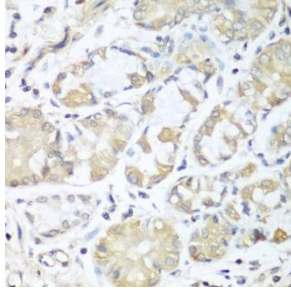
Note: This information is only intended as a guide. The optimal dilutions must be determined by the user



Western blot analysis of extracts of various cell lines, using RPH3AL antibody at 1:1000 dilution. Secondary antibody: HRP Goat Anti-Rabbit IgG (H+L) at 1:10000 dilution. Lysates/proteins: 25 µg per lane. Blocking buffer: 3% nonfat dry milk in TBST. Detection: ECL Basic Kit. Exposure time: 90s.



Immunohistochemistry of paraffin-embedded human liver using RPH3AL antibody at dilution of 1:100 (40x lens).



Immunohistochemistry of paraffin-embedded human stomach using RPH3AL antibody at dilution of 1:100 (40x lens).

RELATED PRODUCTS:

Anti-cAMP Antibody (4H2B6) (A1286)

Anti-Insulin Antibody (5A6A4) (A1365)

Anti-CREB1 Antibody (A1754)

Anti-PTEN Rabbit Monoclonal Antibody (A1607)

FOR RESEARCH USE ONLY! Not to be used on humans.