

Anti-IGF2BP3 Antibody

CATALOG NO.: A1934-100 100 µl.

BACKGROUND DESCRIPTION: The protein encoded by this gene is primarily found in the nucleolus, where it can bind to the 5' UTR of the insulin-like growth factor II leader 3 mRNA and may repress translation of insulin-like growth factor II during late development. The encoded protein contains several KH domains, which are important in RNA binding and are known to be involved in RNA synthesis and metabolism. A pseudogene exists on chromosome 7, and there are putative pseudogenes on other chromosomes.

ALTERNATE NAMES: IGF2BP3; CT98; IMP-3; IMP3; KOC; KOC1; VICKZ3; insulin-like growth factor 2 mRNA-binding protein 3

ANTIBODY TYPE: Polyclonal

HOST/ISOTYPE: Rabbit / IgG

IMMUNOGEN: Recombinant fusion protein corresponding to aa 300-579 of human IGF2BP3 (NP_006538.2)

MOLECULAR WEIGHT: 70kDa

PURIFICATION: Affinity purified

FORM: Liquid

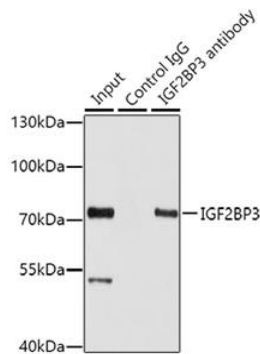
FORMULATION: In PBS with 0.02% sodium azide, 50% glycerol, pH7.3

SPECIES REACTIVITY: Mouse, Human

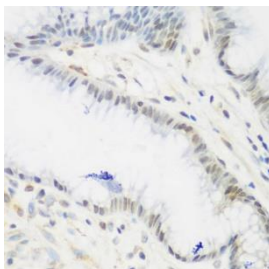
STORAGE CONDITIONS: Store at -20°C. Avoid freeze / thaw cycles

APPLICATIONS AND USAGE: IHC 1:50 - 1:200; IF 1:50 - 1:200; WB 1:500 - 1:2000; IP 1:20 - 1:50

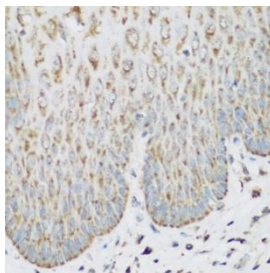
Note: This information is only intended as a guide. The optimal dilutions must be determined by the user



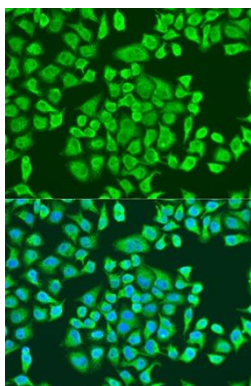
Immunoprecipitation analysis of 100 µg extracts of HepG2 cells using 3 µg IGF2BP3 antibody. Western blot was performed from the immunoprecipitate using IGF2BP3 antibody at a dilution of 1:1000.



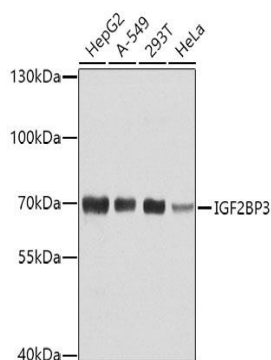
Immunohistochemistry of paraffin-embedded human stomach using IGF2BP3 antibody at dilution of 1:200 (40x lens)



Immunohistochemistry of paraffin-embedded human esophagus using IGF2BP3 antibody at dilution of 1:200 (40x lens)



Immunofluorescence analysis of U2OS cells using IGF2BP3 antibody at dilution of 1:100. Blue: DAPI for nuclear staining



Western blot analysis of extracts of various cell lines, using IGF2BP3 antibody at 1:1000 dilution. Secondary antibody: HRP Goat Anti-Rabbit IgG (H+L) at 1:10000 dilution. Lysates/proteins: 25 µg per lane. Blocking buffer: 3% nonfat dry milk in TBST. Detection: ECL Basic Kit. Exposure time: 15s.

RELATED PRODUCTS:

IGF-BP5 Antibody (5723)

LIMK1 Antibody (3433)

FOXP3 Antibody (3709)

IGF-I Antibody (5119)

FOR RESEARCH USE ONLY! Not to be used on humans.