

Anti-ADI1 Antibody

CATALOG NO.: A1935-100 100 µl.

BACKGROUND DESCRIPTION: This gene encodes an enzyme that belongs to the aci-reductone dioxygenase family of metal-binding enzymes, which are involved in methionine salvage. This enzyme may regulate mRNA processing in the nucleus, and may carry out different functions depending on its localization. Related pseudogenes have been defined on chromosomes 8 and 20. Alternative splicing results in multiple transcript variants encoding different isoforms.

ALTERNATE NAMES: ADI1; APL1; ARD; Fe-ARD; HMFT1638; MTCBP1; Ni-ARD; SIPL; mtnD; acireductone dioxygenase 1

ANTIBODY TYPE: Polyclonal

HOST/ISOTYPE: Rabbit / IgG

IMMUNOGEN: Recombinant fusion protein corresponding to aa 1-179 of human ADI1 (NP_060739.2)

MOLECULAR WEIGHT: 21kDa

PURIFICATION: Affinity purified

FORM: Liquid

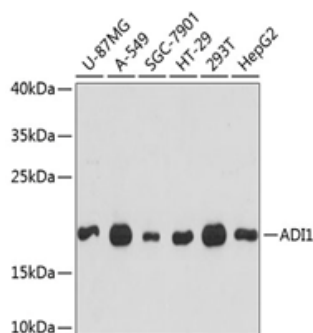
FORMULATION: In PBS with 0.02% sodium azide, 50% glycerol, pH7.3

SPECIES REACTIVITY: Human

STORAGE CONDITIONS: Store at -20°C, Avoid freeze / thaw cycles

APPLICATIONS AND USAGE: WB 1:500 - 1:2000

Note: This information is only intended as a guide. The optimal dilutions must be determined by the user



Western blot analysis of extracts of various cell lines, using ADI1 antibody at 1:3000 dilution. Secondary antibody: HRP Goat Anti-Rabbit IgG (H+L) at 1:10000 dilution. Lysates/proteins: 25 µg per lane. Blocking buffer: 3% nonfat dry milk in TBST. Detection: ECL Basic Kit. Exposure time: 90s.

RELATED PRODUCTS:

APP Antibody (6001)
 Anti-S-Adenosylmethionine Synthetase Antibody (A1900)
 Aldolase C (ALDOC) Antibody (NT) (6757)
 MMP-2 Antibody (5562)

FOR RESEARCH USE ONLY! Not to be used on humans.