

Anti-WWP1 Antibody

CATALOG NO.: A1936-100 100 µl.

BACKGROUND DESCRIPTION: WW domain-containing proteins are found in all eukaryotes and play an important role in the regulation of a wide variety of cellular functions such as protein degradation, transcription, and RNA splicing. This gene encodes a protein which contains 4 tandem WW domains and a HECT (homologous to the E6-associated protein carboxyl terminus) domain. The encoded protein belongs to a family of NEDD4-like proteins, which are E3 ubiquitin-ligase molecules and regulate key trafficking decisions, including targeting of proteins to proteasomes or lysosomes. Alternative splicing of this gene generates at least 6 transcript variants; however, the full-length nature of these transcripts has not been defined.

ALTERNATE NAMES: WWP1; AIP5; Tiul1; hSDRP1; NEDD4-like E3 ubiquitin-protein ligase WWP1

ANTIBODY TYPE: Polyclonal

HOST/ISOTYPE: Rabbit / IgG

IMMUNOGEN: Recombinant fusion protein corresponding to aa 1-260 of human WWP1 (NP_008944.1)

MOLECULAR WEIGHT: 95kDa

PURIFICATION: Affinity purified

FORM: Liquid

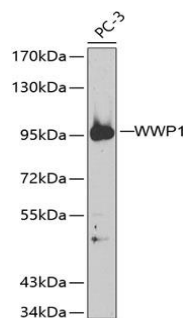
FORMULATION: In PBS with 0.02% sodium azide, 50% glycerol, pH7.3

SPECIES REACTIVITY: Mouse, Human

STORAGE CONDITIONS: Store at -20°C. Avoid freeze / thaw cycles

APPLICATIONS AND USAGE: WB 1:500 - 1:2000

Note: This information is only intended as a guide. The optimal dilutions must be determined by the user



Western blot analysis of extracts of PC-3 cells, using WWP1 antibody. Secondary antibody: HRP Goat Anti-Rabbit IgG (H+L) at 1:10000 dilution. Lysates/proteins: 25 µg per lane. Blocking buffer: 3% nonfat dry milk in TBST.

RELATED PRODUCTS:

Smad5 Antibody (3465)
 Anti-Ubiquitin Antibody (A1702)
 Anti-NEDD1 Antibody (A1647)
 Anti-ERBB4 Antibody (A1862)

FOR RESEARCH USE ONLY! Not to be used on humans.