

# Anti-ERCC1 Antibody

CATALOG NO.: A1937-100 100 µl.

**BACKGROUND DESCRIPTION:** The product of this gene functions in the nucleotide excision repair pathway, and is required for the repair of DNA lesions such as those induced by UV light or formed by electrophilic compounds including cisplatin. The encoded protein forms a heterodimer with the XPF endonuclease (also known as ERCC4), and the heterodimeric endonuclease catalyzes the 5' incision in the process of excising the DNA lesion. The heterodimeric endonuclease is also involved in recombinational DNA repair and in the repair of inter-strand crosslinks. Mutations in this gene result in cerebro-oculo-facio-skeletal syndrome, and polymorphisms that alter expression of this gene may play a role in carcinogenesis. Multiple transcript variants encoding different isoforms have been found for this gene. The last exon of this gene overlaps with the CD3e molecule, epsilon associated protein gene on the opposite strand.

**ALTERNATE NAMES:** ERCC1; COFS4; RAD10; UV20; DNA excision repair protein ERCC-1

**ANTIBODY TYPE:** Polyclonal

**HOST/ISOTYPE:** Rabbit / IgG

**IMMUNOGEN:** Recombinant fusion protein corresponding to aa 1-323 of human ERCC1 (NP\_973730.1)

**MOLECULAR WEIGHT:** 38kDa

**PURIFICATION:** Affinity purified

**FORM:** Liquid

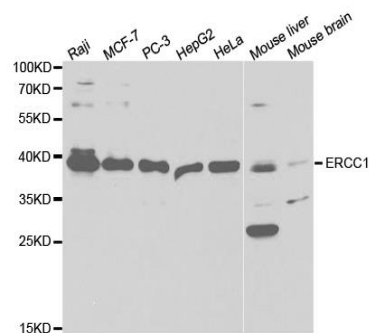
**FORMULATION:** In PBS with 0.02% sodium azide, 50% glycerol, pH7.3

**SPECIES REACTIVITY:** Mouse, Human

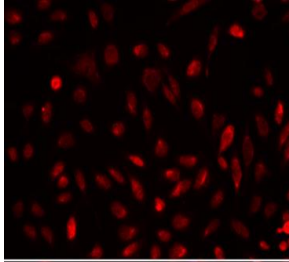
**STORAGE CONDITIONS:** Store at -20°C. Avoid freeze / thaw cycles

**APPLICATIONS AND USAGE:** WB 1:500 - 1:2000; IF 1:50 - 1:200

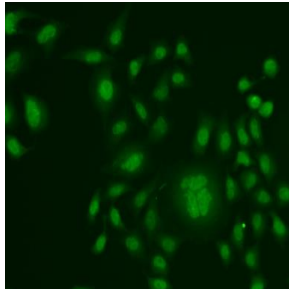
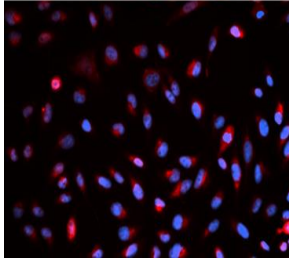
**Note:** This information is only intended as a guide. The optimal dilutions must be determined by the user



Western blot analysis of extracts of various cell lines, using ERCC1 antibody at 1:1000 dilution. Secondary antibody: HRP Goat Anti-Rabbit IgG (H+L) at 1:10000 dilution. Lysates/proteins: 25 µg per lane. Blocking buffer: 3% nonfat dry milk in TBST. Detection: ECL Basic Kit. Exposure time: 90s.



Immunofluorescence analysis of U2OS cells using ERCC1 antibody. Blue: DAPI for nuclear staining



Immunofluorescence analysis of HeLa cells using ERCC1 antibody

**RELATED PRODUCTS:**

Anti-ATR / RAD54 Antibody (39f) (A1432)  
Anti-RAD9A Antibody (3A3-A7-F8) (A1316)  
ATM Antibody (3813)  
Phospho-Cdk1/2/3 (Thr14) Antibody (A1260)

***FOR RESEARCH USE ONLY! Not to be used on humans.***