

Phospho PAK2 (Ser20) Antibody

CATALOG NO.: A1940-100 (100 µl)

BACKGROUND DESCRIPTION: The p21 activated kinases (PAK) are critical effectors that link Rho GTPases to cytoskeleton reorganization and nuclear signaling. The PAK proteins are a family of serine/threonine kinases that serve as targets for the small GTP binding proteins, CDC42 and RAC1, and have been implicated in a wide range of biological activities. The protein encoded by this gene is activated by proteolytic cleavage during caspase-mediated apoptosis, and may play a role in regulating the apoptotic events in the dying cell.

ALTERNATE NAMES: PAK2; PAK65; PAKgamma; p21 (RAC1) activated kinase 2

ANTIBODY TYPE: Polyclonal

HOST/ISOTYPE: Rabbit / IgG

IMMUNOGEN: A synthetic phosphorylated peptide around Ser20 of human PAK2

MOLECULAR WEIGHT: 58 kDa

PURIFICATION: Affinity purified

FORM: Liquid

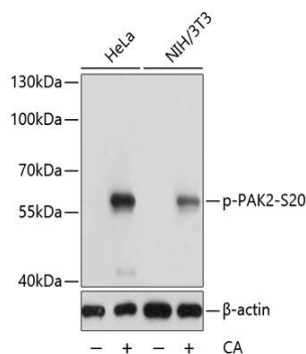
FORMULATION: In PBS with 0.02% sodium azide, 50% glycerol, pH7.3

SPECIES REACTIVITY: Mouse, Human

STORAGE CONDITIONS: Store at -20°C. Avoid freeze / thaw cycles

APPLICATIONS AND USAGE: WB 1:500 - 1:2000

Note: This information is only intended as a guide. The optimal dilutions must be determined by the user



Western blot analysis of extracts of HeLa and NIH/3T3 cells, using phospho PAK2 (Ser20) antibody at 1:2000 dilution. HeLa cells were treated by Calyculin A (100nM) for 30 minutes after serum-starvation overnight. NIH/3T3 cells were treated by Calyculin A (100nM) for 30 minutes after serum-starvation overnight. Secondary antibody: HRP Goat Anti-Rabbit IgG (H+L) at 1:10000 dilution. Lysates/proteins: 25 µg per lane. Blocking buffer: 3% BSA. Detection: ECL Basic Kit. Exposure time: 5s.

RELATED PRODUCTS:

Anti-TGF-β1 Antibody (A1456)
 PAK2 Antibody (3443)
 Anti-Caspase-7 Antibody (A1752)
 Anti-Phospho-ERK1/2 (Thr202/Tyr204) Antibody (A1589)
 Phospho-PAK3 (Ser154) Antibody (A1726)

FOR RESEARCH USE ONLY! Not to be used on humans.