

# Phospho STMN1 (Ser38) Antibody

rev 12/19

**CATALOG NO.:** A1942-100 (100 µl)

**BACKGROUND DESCRIPTION:** This gene belongs to the stathmin family of genes. It encodes a ubiquitous cytosolic phosphoprotein proposed to function as an intracellular relay integrating regulatory signals of the cellular environment. The encoded protein is involved in the regulation of the microtubule filament system by destabilizing microtubules. It prevents assembly and promotes disassembly of microtubules. Multiple transcript variants encoding different isoforms have been found for this gene.

**ALTERNATE NAMES:** STMN1; C1orf215; LAP18; Lag; OP18; PP17; PP19; PR22; SMN; stathmin

**ANTIBODY TYPE:** Polyclonal

**HOST/ISOTYPE:** Rabbit / IgG

**IMMUNOGEN:** A phospho specific peptide corresponding to residues surrounding Ser38 of human STMN1

**MOLECULAR WEIGHT:** 18 kDa

**PURIFICATION:** Affinity purified

**FORM:** Liquid

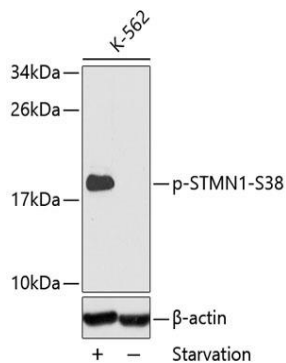
**FORMULATION:** In PBS with 0.02% sodium azide, 50% glycerol, pH7.3

**SPECIES REACTIVITY:** Human

**STORAGE CONDITIONS:** Store at -20°C. Avoid freeze / thaw cycles

**APPLICATIONS AND USAGE:** WB 1:500 - 1:2000

**Note:** This information is only intended as a guide. The optimal dilutions must be determined by the user



Western blot analysis of extracts of K-562 cells, using phospho STMN1 (Ser38) antibody. K562 cells were treated by serum-starvation overnight. Secondary antibody: HRP Goat Anti-Rabbit IgG (H+L) at 1:10000 dilution. Lysates/proteins: 25 µg per lane. Blocking buffer: 3% BSA.

## RELATED PRODUCTS:

Anti- $\alpha$ -Tubulin, Rabbit Monoclonal Antibody (A1812)  
 Anti-Beta-tubulin Antibody (A1216)  
 $\beta$ -Amyloid Polyclonal Antibody (3356)  
 Anti-Stathmin (STMN1) Rabbit Monoclonal Antibody (RM350) (A1856)

**FOR RESEARCH USE ONLY! Not to be used on humans.**