

Phospho Histone H3 (Ser10) Antibody

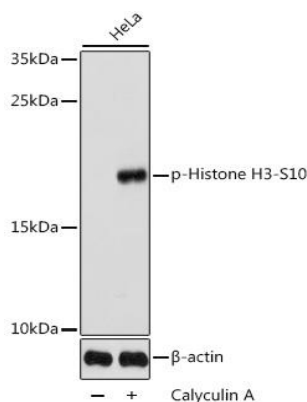
rev 12/19

CATALOG NO.: A1943-100 (100 µl)

BACKGROUND DESCRIPTION: Histones are basic nuclear proteins that are responsible for the nucleosome structure of the chromosomal fiber in eukaryotes. Nucleosomes consist of approximately 146 bp of DNA wrapped around a histone octamer composed of pairs of each of the four core histones (H2A, H2B, H3, and H4). The chromatin fiber is further compacted through the interaction of a linker histone, H1, with the DNA between the nucleosomes to form higher order chromatin structures. This gene is intron-less and encodes a replication-dependent histone that is a member of the histone H3 family. Transcripts from this gene lack poly A tails; instead, they contain a palindromic termination element. This gene is located separately from the other H3 genes that are in the histone gene cluster on chromosome 6p22-p21.3.

ALTERNATE NAMES:	HIST3H3; H3.4; H3/g; H3FT; H3t; histone H3.1t
ANTIBODY TYPE:	Polyclonal
HOST/ISOTYPE:	Rabbit / IgG
IMMUNOGEN:	A synthetic phosphorylated peptide around Ser10 of human Histone H3
MOLECULAR WEIGHT:	17 kDa
PURIFICATION:	Affinity purified
FORM:	Liquid
FORMULATION:	In PBS with 0.02% sodium azide, 50% glycerol, pH7.3
SPECIES REACTIVITY:	Human
STORAGE CONDITIONS:	Store at -20°C. Avoid freeze / thaw cycles
APPLICATIONS AND USAGE:	WB 1:500 - 1:2000

Note: This information is only intended as a guide. The optimal dilutions must be determined by the user



Western blot analysis of extracts of HeLa cells, using phospho Histone H3 (Ser10) antibody at 1:1000 dilution. HeLa cells were treated by Calyculin A (100nM) at 37°C for 30 minutes after serum-starvation overnight. Secondary antibody: HRP Goat Anti-Rabbit IgG (H+L) at 1:10000 dilution. Lysates/proteins: 25 µg per lane. Blocking buffer: 3% BSA. Detection: ECL Basic Kit. Exposure time: 180s.

RELATED PRODUCTS:

Anti-Histone H3 pan, Rabbit Monoclonal Antibody (A1141)
 Histone H3 (phospho-Ser28) (Clone 117C826) Antibody (6119)
 Anti- Histone H3.3 Rabbit Monoclonal Antibody (A1140)
 Anti-p38 MAPK Rabbit Monoclonal Antibody (A1125)

FOR RESEARCH USE ONLY! Not to be used on humans.