

Phospho EIF4EBP1 (Thr36) Antibody

rev 12/19

CATALOG NO.: A1945-100 (100 µl)

BACKGROUND DESCRIPTION: This gene encodes one member of a family of translation repressor proteins. The protein directly interacts with eukaryotic translation initiation factor 4E (eIF4E), which is a limiting component of the multi-subunit complex that recruits 40S ribosomal subunits to the 5' end of mRNAs. Interaction of this protein with eIF4E inhibits complex assembly and represses translation. This protein is phosphorylated in response to various signals including UV irradiation and insulin signaling, resulting in its dissociation from eIF4E and activation of mRNA translation.

ALTERNATE NAMES: EIF4EBP1; 4E-BP1; 4EBP1; BP-1; PHAS-I; eukaryotic translation initiation factor 4E-binding protein 1

ANTIBODY TYPE: Polyclonal

HOST/ISOTYPE: Rabbit / IgG

IMMUNOGEN: A phospho specific peptide corresponding to residues surrounding Thr36 of human EIF4EBP1

MOLECULAR WEIGHT: 20 kDa

PURIFICATION: Affinity purified

FORM: Liquid

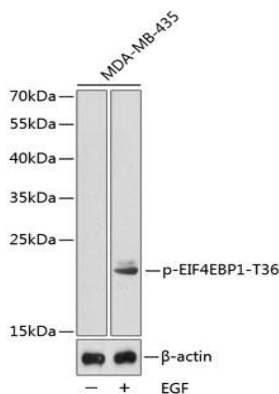
FORMULATION: In PBS with 0.02% sodium azide, 50% glycerol, pH7.3

SPECIES REACTIVITY: Mouse, Rat, Human

STORAGE CONDITIONS: Store at -20°C. Avoid freeze / thaw cycles

APPLICATIONS AND USAGE: WB 1:500 - 1:2000

Note: This information is only intended as a guide. The optimal dilutions must be determined by the user



Western blot analysis of extracts from MDA-MB-435 cells, using phospho EIF4EBP1 (Thr36) antibody. Secondary antibody: HRP Goat Anti-Rabbit IgG (H+L) at 1:10000 dilution. Lysates/proteins: 25 µg per lane. Blocking buffer: 3% BSA.

RELATED PRODUCTS:

Phospho-AMPKβ1 (Ser182) Antibody (A1248)
 Phospho-AKT1 (Ser473) Antibody (A1041)
 Phospho-IGFIR (Tyr980) Antibody (A1040)
 Anti-mTOR Rabbit Monoclonal Antibody (A1595)

FOR RESEARCH USE ONLY! Not to be used on humans.