

Phospho SRC Family (Tyr416) Antibody

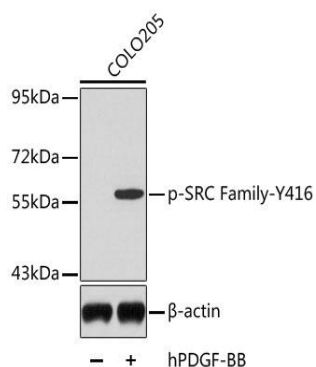
rev 12/19

CATALOG NO.: A1946-100 (100 µl)

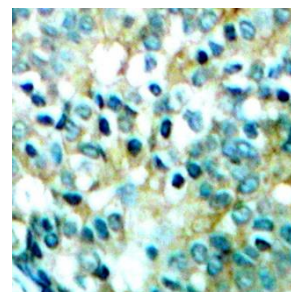
BACKGROUND DESCRIPTION: This gene is highly similar to the v-src gene of Rous sarcoma virus. This proto-oncogene may play a role in the regulation of embryonic development and cell growth. The protein encoded by this gene is a tyrosine-protein kinase whose activity can be inhibited by phosphorylation by c-SRC kinase. Mutations in this gene could be involved in the malignant progression of colon cancer. Two transcript variants encoding the same protein have been found for this gene.

ALTERNATE NAMES:	SRC; ASV; SRC1; THC6; c-SRC; p60-Src; proto-oncogene tyrosine-protein kinase Src
ANTIBODY TYPE:	Polyclonal
HOST/ISOTYPE:	Rabbit / IgG
IMMUNOGEN:	A phospho specific peptide corresponding to residues surrounding Tyr416 of human SRC Family
MOLECULAR WEIGHT:	60 kDa
PURIFICATION:	Affinity purified
FORM:	Liquid
FORMULATION:	In PBS with 0.02% sodium azide, 50% glycerol, pH7.3
SPECIES REACTIVITY:	Mouse, Rat, Human
STORAGE CONDITIONS:	Store at -20°C. Avoid freeze / thaw cycles
APPLICATIONS AND USAGE:	WB 1:500 - 1:2000, IHC 1:50 - 1:100

Note: This information is only intended as a guide. The optimal dilutions must be determined by the user



Western blot analysis of extracts from COLO205 cells, using phospho SRC Family (Tyr416) antibody.



Immunohistochemistry of paraffin-embedded human breast carcinoma tissue, using phospho SRC (Tyr416) antibody.

RELATED PRODUCTS:

VEGF-D Antibody (5643)
 NCOA1 Antibody (6153)
 Wnt-1 Antibody (5754)
 SRC3 Antibody (3773)

FOR RESEARCH USE ONLY! Not to be used on humans.