

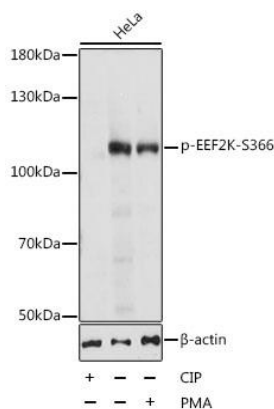
Phospho EEF2K (Ser366) Antibody

CATALOG NO.: A1947-100 (100 µl)

BACKGROUND DESCRIPTION: This gene encodes a highly conserved protein kinase in the calmodulin-mediated signaling pathway that links activation of cell surface receptors to cell division. This kinase is involved in the regulation of protein synthesis. It phosphorylates eukaryotic elongation factor 2 (EEF2) and thus inhibits the EEF2 function. The activity of this kinase is increased in many cancers and may be a valid target for anti-cancer treatment.

ALTERNATE NAMES:	EEF2K; HSU93850; eEF-2K; eukaryotic elongation factor 2 kinase
ANTIBODY TYPE:	Polyclonal
HOST/ISOTYPE:	Rabbit / IgG
IMMUNOGEN:	A synthetic phosphorylated peptide around Ser366 of human EEF2K
MOLECULAR WEIGHT:	105 kDa
PURIFICATION:	Affinity purified
FORM:	Liquid
FORMULATION:	In PBS with 0.02% sodium azide, 50% glycerol, pH7.3
SPECIES REACTIVITY:	Mouse, Rat, Human
STORAGE CONDITIONS:	Store at -20°C. Avoid freeze / thaw cycles
APPLICATIONS AND USAGE:	WB 1:500 - 1:2000

Note: This information is only intended as a guide. The optimal dilutions must be determined by the user



Western blot analysis of extracts of HeLa cells, using phospho EEF2K (Ser366) antibody at 1:1000 dilution. HeLa cell lysate were treated by CIP (20 µl CIP for each 400 µl cell lysate) at 37°C for 1 hour or treated by PMA/TPA (200nM) for 15 minutes after serum-starvation overnight. Secondary antibody: HRP Goat Anti-Rabbit IgG (H+L) at 1:10000 dilution. Lysates/proteins: 25 µg per lane. Blocking buffer: 3% BSA. Detection: ECL Basic Kit. Exposure time: 15s.

RELATED PRODUCTS:

Anti-p38 MAPK Rabbit Monoclonal Antibody (A1125)
 Anti-EEF1A Antibody (A1207)
 Anti-EEF2 Antibody (4B3-G7-H5) (A1314)
 Phospho-AMPKβ1 (Ser182) Antibody (A1248)

FOR RESEARCH USE ONLY! Not to be used on humans.