

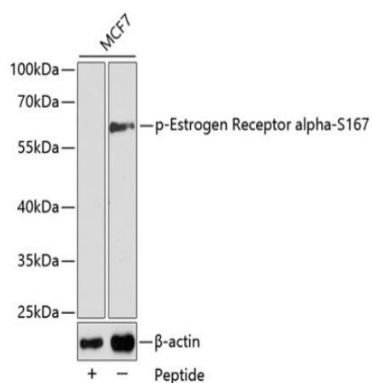
# Phospho ER-alpha (Ser167) Antibody

CATALOG NO.: A1948-100 (100 µl)

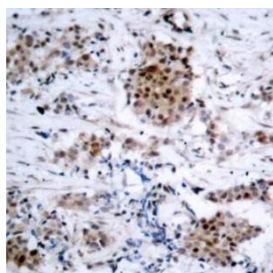
**BACKGROUND DESCRIPTION:** This gene encodes an estrogen receptor, a ligand-activated transcription factor composed of several domains important for hormone binding, DNA binding, and activation of transcription. The protein localizes to the nucleus where it may form a homodimer or a heterodimer with estrogen receptor 2. Estrogen and its receptors are essential for sexual development and reproductive function, but also play a role in other tissues such as bone. Estrogen receptors are also involved in pathological processes including breast cancer, endometrial cancer, and osteoporosis. Alternative promoter usage and alternative splicing result in dozens of transcript variants, but the full-length nature of many of these variants has not been determined.

<b>ALTERNATE NAMES:</b>	ESR1; ER; ESR; ESRA; ESTRR; Era; NR3A1; estrogen receptor
<b>ANTIBODY TYPE:</b>	Polyclonal
<b>HOST/ISOTYPE:</b>	Rabbit / IgG
<b>IMMUNOGEN:</b>	A phospho specific peptide corresponding to residues surrounding Ser167 of human ER-alpha
<b>MOLECULAR WEIGHT:</b>	66 kDa
<b>PURIFICATION:</b>	Affinity purified
<b>FORM:</b>	Liquid
<b>FORMULATION:</b>	In PBS with 0.02% sodium azide, 50% glycerol, pH7.3
<b>SPECIES REACTIVITY:</b>	Human
<b>STORAGE CONDITIONS:</b>	Store at -20°C; Store at -20°C. Avoid freeze / thaw cycles
<b>APPLICATIONS AND USAGE:</b>	WB 1:500 - 1:2000, IHC 1:50 - 1:100, IF 1:100 - 1:200.

**Note:** This information is only intended as a guide. The optimal dilutions must be determined by the user



Western blot analysis of extracts from MCF7 cells using phospho ER-alpha (Ser167) antibody. Secondary antibody: HRP Goat Anti-Rabbit IgG (H+L) at 1:10000 dilution. Lysates/proteins: 25 µg per lane. Blocking buffer: 3% BSA.



Immunohistochemistry of paraffin-embedded human breast carcinoma using phospho ER-alpha (Ser167) antibody.

