

Phospho FOXO1 (Ser256) Antibody

rev 12/19

CATALOG NO.: A1956-100 (100 µl)

BACKGROUND DESCRIPTION: This gene belongs to the forkhead family of transcription factors which are characterized by a distinct forkhead domain. The specific function of this gene has not yet been determined; however, it may play a role in myogenic growth and differentiation. Translocation of this gene with PAX3 has been associated with alveolar rhabdomyosarcoma.

ALTERNATE NAMES: FKHR; FOXO1A; Forkhead box protein O1; Forkhead box protein O1A; Forkhead in rhabdomyosarcoma

ANTIBODY TYPE: Polyclonal

HOST/ISOTYPE: Rabbit / IgG

IMMUNOGEN: KLH-conjugated synthetic peptide targeting a sequence within the center region of human FOXO1

MOLECULAR WEIGHT: 78 kDa

PURIFICATION: Affinity purified

FORM: Liquid

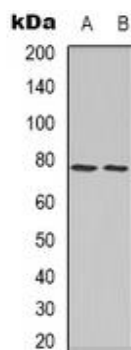
FORMULATION: In 0.42% Potassium phosphate; 0.87% NaCl; pH 7.3; 30% glycerol; and 0.01% sodium azide

SPECIES REACTIVITY: Human, Mouse, Rat, Porcine, Bovine, Zebrafish

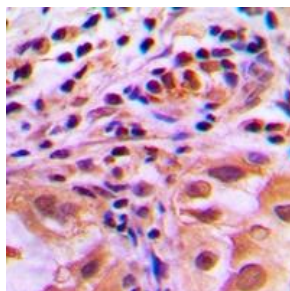
STORAGE CONDITIONS: Store at -20°C. Avoid freeze/thaw cycles

APPLICATIONS AND USAGE: WB 1:500 - 1:1000, IHC 1:100 - 1:200, IF 1:100 - 1:500, IP 1:10 - 1:100

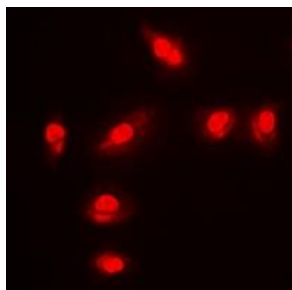
Note: This information is only intended as a guide. The optimal dilutions must be determined by the user



Western blot analysis of phospho FOXO1 (Ser256) expression in HeLa (A); SHSY5Y (B) whole cell lysates.



Immunohistochemical analysis of phospho FOXO1 (Ser256) staining in human lung cancer formalin fixed paraffin embedded tissue section. The section was pre-treated using heat mediated antigen retrieval with sodium citrate buffer (pH 6.0) and then incubated with the antibody at RT and detected using an HRP conjugated compact polymer system. DAB was used as the chromogen. The section was then counterstained with hematoxylin and mounted with DPX.



Immunofluorescent analysis of phospho FOXO1 (Ser256) staining in MCF7 cells. Formalin-fixed cells were permeabilized with 0.1% Triton X-100 in TBS for 5-10 minutes and blocked with 3% BSA-PBS for 30 minutes at RT. Cells were probed with the primary antibody in 3% BSA-PBS and incubated overnight at 4 C in a humidified chamber. Cells were washed with PBST and incubated with a DyLight 594-conjugated secondary antibody (red) in PBS at RT in the dark. DAPI was used to stain the cell nuclei (blue).

RELATED PRODUCTS:

FoxH1 Antibody (3892)
Anti-Akt1 Rabbit Monoclonal Antibody (A1117)
Phospho-FoxO1 (Ser319) antibody (A1018)
SIRT1 Antibody (6137)

FOR RESEARCH USE ONLY! Not to be used on humans.