

# Phospho TSC2 (Thr1462) Antibody

rev 12/19

CATALOG NO.: A1959-100 (100 µl)

**BACKGROUND DESCRIPTION:** Mutations in this gene lead to tuberous sclerosis complex. Its gene product is believed to be a tumor suppressor and is able to stimulate specific GTPases. The protein associates with hamartin in a cytosolic complex, possibly acting as a chaperone for hamartin. Alternative splicing results in multiple transcript variants encoding different isoforms.

**ALTERNATE NAMES:** TSC4; Tuberin; Tuberous sclerosis 2 protein, LAM; PPP1R160

**ANTIBODY TYPE:** Polyclonal

**HOST/ISOTYPE:** Rabbit / IgG

**IMMUNOGEN:** KLH-conjugated synthetic peptide targeting a sequence within the C-term region of human TSC2

**MOLECULAR WEIGHT:** 200 kDa

**PURIFICATION:** Affinity purified

**FORM:** Liquid

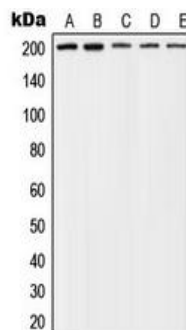
**FORMULATION:** In 0.42% Potassium phosphate; 0.87% NaCl; pH 7.3; 30% glycerol; and 0.01% sodium azide

**SPECIES REACTIVITY:** Human, Mouse, Rat, Monkey

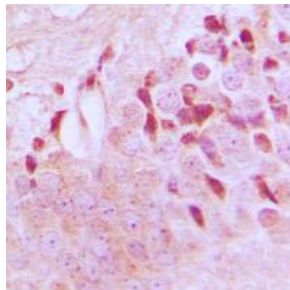
**STORAGE CONDITIONS:** Store at -20°C. Avoid freeze / thaw cycles

**APPLICATIONS AND USAGE:** WB 1:500 - 1:1000), IHC 1:100 - 1:200, IF 1:100 - 1:500

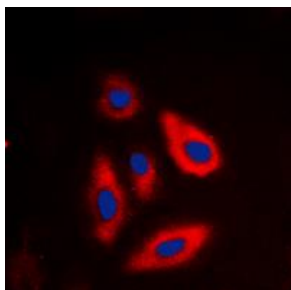
**Note:** This information is only intended as a guide. The optimal dilutions must be determined by the user



Western blot analysis of phospho TSC2 (Thr1462) expression in SHSY5Y (A); PC3 (B); LNCaP (C); NIH3T3 (D); PC12 (E) whole cell lysates.



Immunohistochemical analysis of phospho TSC2 (Thr1462) staining in human brain formalin fixed paraffin embedded tissue section. The section was pre-treated using heat mediated antigen retrieval with sodium citrate buffer (pH 6.0) and then incubated with the antibody at RT and detected using an HRP conjugated compact polymer system. DAB was used as the chromogen. The section was then counterstained with hematoxylin and mounted with DPX.



Immunofluorescent analysis of phospho TSC2 (Thr1462) staining in SHSY5Y cells. Formalin-fixed cells were permeabilized with 0.1% Triton X-100 in TBS for 5-10 minutes and blocked with 3% BSA-PBS for 30 minutes at RT. Cells were probed with the primary antibody in 3% BSA-PBS and incubated overnight at 4 C in a humidified chamber. Cells were washed with PBST and incubated with a DyLight 594-conjugated secondary antibody (red) in PBS at RT in the dark. DAPI was used to stain the cell nuclei (blue).

**RELATED PRODUCTS:**

TSC1 Antibody (3955)  
Anti-Akt1 Rabbit Monoclonal Antibody (A1117)  
Phospho-AMPK $\beta$ 1 (Ser182) Antibody (A1248)  
Anti-mTOR Rabbit Monoclonal Antibody (A1595)  
TSC2 Antibody (3962)

***FOR RESEARCH USE ONLY! Not to be used on humans.***