

# Phospho RPS6 (Ser235) Antibody

rev 12/19

---

**CATALOG NO.:** A1960-100 (100 µl)
 

---

**BACKGROUND DESCRIPTION:** Ribosomes, the organelles that catalyze protein synthesis, consist of a small 40S subunit and a large 60S subunit. Together these subunits are composed of 4 RNA species and approximately 80 structurally distinct proteins. This gene encodes a cytoplasmic ribosomal protein that is a component of the 40S subunit. The protein belongs to the S6E family of ribosomal proteins. It is the major substrate of protein kinases in the ribosome, with subsets of five C-terminal serine residues phosphorylated by different protein kinases. Phosphorylation is induced by a wide range of stimuli, including growth factors, tumor-promoting agents, and mitogens. Dephosphorylation occurs at growth arrest. The protein may contribute to the control of cell growth and proliferation through the selective translation of particular classes of mRNA. As is typical for genes encoding ribosomal proteins, there are multiple processed pseudogenes of this gene dispersed through the genome.

**ALTERNATE NAMES:** 40S ribosomal protein S6; Phosphoprotein NP33

**ANTIBODY TYPE:** Polyclonal

**HOST/ISOTYPE:** Rabbit / IgG

**IMMUNOGEN:** KLH-conjugated synthetic peptide targeting a sequence within the C-term region of human RPS6

**MOLECULAR WEIGHT:** 32 kDa

**PURIFICATION:** Affinity purified

**FORM:** Liquid

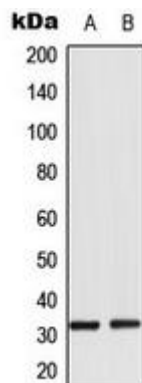
**FORMULATION:** In 0.42% Potassium phosphate; 0.87% NaCl; pH 7.3; 30% glycerol; and 0.01% sodium azide

**SPECIES REACTIVITY:** Human, Mouse, Rat, Bovine, Chicken, Monkey, Sheep, Zebrafish

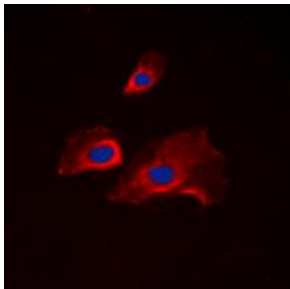
**STORAGE CONDITIONS:** Store at -20°C. Avoid freeze / thaw cycles

**APPLICATIONS AND USAGE:** WB 1:500 - 1:1000, IF 1:100 - 1:500

**Note:** This information is only intended as a guide. The optimal dilutions must be determined by the user



Western blot analysis of phospho RPS6 (Ser235) expression in HeLa Calyculin A-treated (A); NIH3T3 (B) whole cell lysates.



Immunofluorescent analysis of phospho RPS6 (Ser235) staining in NIH3T3 cells. Formalin-fixed cells were permeabilized with 0.1% Triton X-100 in TBS for 5-10 minutes and blocked with 3% BSA-PBS for 30 minutes at RT. Cells were probed with the primary antibody in 3% BSA-PBS and incubated overnight at 4 C in a humidified chamber. Cells were washed with PBST and incubated with a DyLight 594-conjugated secondary antibody (red) in PBS at RT in the dark. DAPI was used to stain the cell nuclei (blue).

**RELATED PRODUCTS:**

p70 S6 Kinase Antibody (3485)  
Phospho-AKT1 (Ser473) Antibody (A1041)  
Phospho-p70 S6 Kinase Antibody (3505)  
Anti-mTOR Rabbit Monoclonal Antibody (A1595)

***FOR RESEARCH USE ONLY! Not to be used on humans.***