

Phospho PDGFR-beta (Tyr751) Antibody

rev 12/19

CATALOG NO.: A1962-100 (100 µl)

BACKGROUND DESCRIPTION: The protein encoded by this gene is a cell surface tyrosine kinase receptor for members of the platelet-derived growth factor family. These growth factors are mitogens for cells of mesenchymal origin. The identity of the growth factor bound to a receptor monomer determines whether the functional receptor is a homodimer (PDGFB or PDGFD) or a heterodimer (PDGFA and PDGFB). This gene is essential for normal development of the cardiovascular system and aids in rearrangement of the actin cytoskeleton. This gene is flanked on chromosome 5 by the genes for granulocyte-macrophage colony-stimulating factor and macrophage-colony stimulating factor receptor; all three genes may be implicated in the 5-q syndrome. A translocation between chromosomes 5 and 12, that fuses this gene to that of the ETV6 gene, results in chronic myeloproliferative disorder with eosinophilia.

ALTERNATE NAMES: PDGFR; PDGFR1; Platelet-derived growth factor receptor beta; PDGF-R-beta; PDGFR-beta; Beta platelet-derived growth factor receptor; Beta-type platelet-derived growth factor receptor; CD140 antigen-like family member B; Platelet-derived growth factor receptor 1; PDGFR-1; CD140b.

ANTIBODY TYPE: Polyclonal

HOST/ISOTYPE: Rabbit / IgG

IMMUNOGEN: KLH-conjugated synthetic peptide targeting a sequence within the center region of human PDGFR-beta

MOLECULAR WEIGHT: 190 kDa

PURIFICATION: Affinity purified

FORM: Liquid

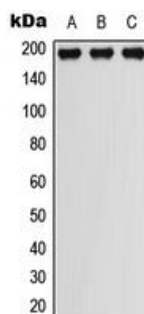
FORMULATION: In 0.42% Potassium phosphate; 0.87% NaCl; pH 7.3; 30% glycerol; and 0.01% sodium azide

SPECIES REACTIVITY: Human, Mouse, Rat, Rabbit, Dog, Porcine, Bovine

STORAGE CONDITIONS: Store at -20°C. Avoid freeze / thaw cycles

APPLICATIONS AND USAGE: WB 1:500 - 1:1000

Note: This information is only intended as a guide. The optimal dilutions must be determined by the user



Western blot analysis of phospho PDGFR-beta (Tyr751) expression in THP1 EGF-treated (A); RAW264.7 EGF-treated (B); rat liver (C) whole cell lysates.

RELATED PRODUCTS:

Anti-PTEN Rabbit Monoclonal Antibody (A1607)
 PDGFR Antibody (Clone # 275CT1) (6787)
 Anti-Phospho-EGFR (Tyr1173) Rabbit Monoclonal Antibody (A1593)
 Phospho-PDGFR beta (Tyr716) Antibody (A1035)

FOR RESEARCH USE ONLY! Not to be used on humans.