

Phospho GRK2 (Ser29) Antibody

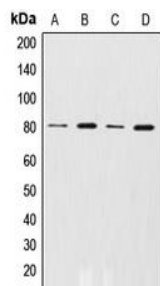
rev 12/19

CATALOG NO.: A1964-100 (100 µl)

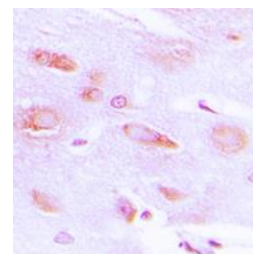
BACKGROUND DESCRIPTION: This gene encodes a member of the G protein-coupled receptor kinase family of proteins. The encoded protein phosphorylates the beta-adrenergic receptor as well as a wide range of other substrates including non-GPCR cell surface receptors, and cytoskeletal, mitochondrial, and transcription factor proteins. Data from rodent models supports a role for this gene in embryonic development, heart function and metabolism. Elevated expression of this gene has been observed in human patients with heart failure and Alzheimer's disease.

ALTERNATE NAMES:	BARK; BARK1; GRK2; Beta-adrenergic receptor kinase 1; Beta-ARK-1; G-protein coupled receptor kinase 2
ANTIBODY TYPE:	Polyclonal
HOST/ISOTYPE:	Rabbit / IgG
IMMUNOGEN:	KLH-conjugated synthetic peptide targeting a sequence within the N-term region of human GRK2
MOLECULAR WEIGHT:	80 kDa
PURIFICATION:	Affinity purified
FORM:	Liquid
FORMULATION:	In 0.42% Potassium phosphate; 0.87% NaCl; pH 7.3; 30% glycerol; and 0.01% sodium azide
SPECIES REACTIVITY:	Human, Mouse, Rat, Bovine
STORAGE CONDITIONS:	Store at -20°C. Avoid freeze / thaw cycles
APPLICATIONS AND USAGE:	WB 1:500 - 1:1000, IHC 1:100 - 1:200

Note: This information is only intended as a guide. The optimal dilutions must be determined by the user



Western blot analysis of phospho GRK2 (Ser29) expression in Ramos (A); THP1 (B); U937 (C); C6 (D) whole cell lysates.



Immunohistochemical analysis of phospho GRK2 (Ser29) staining in human brain formalin fixed paraffin embedded tissue section. The section was pre-treated using heat mediated antigen retrieval with sodium citrate buffer (pH 6.0), then incubated with the antibody at RT and detected using an HRP conjugated compact polymer system. DAB was used as the chromogen. The section was then counterstained with hematoxylin and mounted with DPX.

RELATED PRODUCTS:

Anti-Phospho-EGFR (Tyr1173) Rabbit Monoclonal Antibody (A1593)
 Phospho-eNOS (Ser615) Antibody (A1730)
 AKT1 Antibody (NT) (6745)
 GSK-3α Antibody (6676)

FOR RESEARCH USE ONLY! Not to be used on humans

Gentaur Europe BVBA Voortstraat 49, 1910 Kampenhout BELGIUM
 Tel 0032 16 58 90 45 info@gentaur.com

