

Phospho Ezrin (Thr567) Antibody

rev 12/19

CATALOG NO.: A1970-100 (100 µl)

BACKGROUND DESCRIPTION: The cytoplasmic peripheral membrane protein encoded by this gene functions as a protein-tyrosine kinase substrate in microvilli. As a member of the ERM protein family, this protein serves as an intermediate between the plasma membrane and the actin cytoskeleton. This protein plays a key role in cell surface structure adhesion, migration and organization, and it has been implicated in various human cancers. A pseudogene located on chromosome 3 has been identified for this gene. Alternatively spliced variants have also been described for this gene.

ALTERNATE NAMES: VIL2; Ezrin; Cytovillin; Villin-2; p81

ANTIBODY TYPE: Polyclonal

HOST/ISOTYPE: Rabbit / IgG

IMMUNOGEN: KLH-conjugated synthetic peptide targeting a sequence within the C-term region of human Ezrin

MOLECULAR WEIGHT: 80 kDa

PURIFICATION: Affinity purified

FORM: Liquid

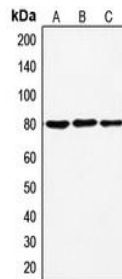
FORMULATION: In 0.42% Potassium phosphate; 0.87% NaCl; pH 7.3; 30% glycerol; and 0.01% sodium azide

SPECIES REACTIVITY: Human, Mouse, Chicken, Rat, Porcine, Zebrafish, Bovine

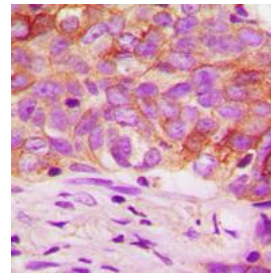
STORAGE CONDITIONS: Store at -20°C. Avoid freeze / thaw cycles

APPLICATIONS AND USAGE: WB 1:500 - 1:1000, IHC 1:100 - 1:200

Note: This information is only intended as a guide. The optimal dilutions must be determined by the user



Western blot analysis of phospho Ezrin (Thr567) expression in HeLa (A); A431 (B); SHSY5Y (C) whole cell lysates.



Immunohistochemical analysis of phospho Ezrin (Thr567) staining in human breast cancer formalin fixed paraffin embedded tissue section. The section was pre-treated using heat mediated antigen retrieval with sodium citrate buffer (pH 6.0), then incubated with the antibody at RT and detected using an HRP conjugated compact polymer system. DAB was used as the chromogen. The section was then counterstained with hematoxylin and mounted with DPX.

RELATED PRODUCTS:

GSK-3 α Antibody (6676)
 VCAM-1/CD106 Antibody (Center) (6783)
 Anti- β -Actin, Rabbit Monoclonal Antibody (A1813)
 Anti-PTEN Rabbit Monoclonal Antibody (A1607)
 Anti-Akt1 Rabbit Monoclonal Antibody (A1117)

FOR RESEARCH USE ONLY! Not to be used on humans.