

Phospho TGFBR2 (Ser225) Antibody

rev 12/19

CATALOG NO.: A1975-100 (100 µl)

BACKGROUND DESCRIPTION: The protein encoded by this gene is a transmembrane protein that has a protein kinase domain, forms a heterodimeric complex with TGF-beta receptor type-1, and binds TGF-beta. This receptor/ligand complex phosphorylates proteins, which then enter the nucleus and regulate the transcription of genes related to cell proliferation, cell cycle arrest, wound healing, immunosuppression, and tumorigenesis. Mutations in this gene have been associated with Marfan Syndrome, Loeys-Deitz Aortic Aneurysm Syndrome, and the development of various types of tumors. Alternatively spliced transcript variants encoding different isoforms have been characterized.

ALTERNATE NAMES: TGF-beta receptor type-2; TGFR-2; TGF-beta type II receptor; Transforming growth factor-beta receptor type II; TGF-beta receptor type II; TbetaR-II.

ANTIBODY TYPE: Polyclonal

HOST/ISOTYPE: Rabbit / IgG

IMMUNOGEN: KLH-conjugated synthetic peptide targeting a sequence within the center region of human TGFBR2

MOLECULAR WEIGHT: 70 kDa

PURIFICATION: Affinity purified

FORM: Liquid

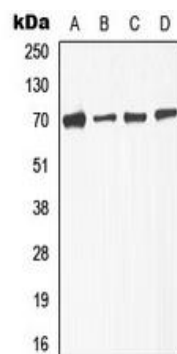
FORMULATION: In 0.42% Potassium phosphate; 0.87% NaCl; pH 7.3; 30% glycerol; and 0.01% sodium azide

SPECIES REACTIVITY: Human, Mouse, Rat, Rabbit, Porcine

STORAGE CONDITIONS: Store at -20°C. Avoid freeze / thaw cycles

APPLICATIONS AND USAGE: WB 1:500 - 1:1000

Note: This information is only intended as a guide. The optimal dilutions must be determined by the user



Western blot analysis of phospho TGFBR2 (Ser225) expression in A549 (A); NIH3T3L1 (B); KNRK (C); HepG2 (D) whole cell lysates.

RELATED PRODUCTS:

TGF-beta Receptor II Antibody (5639R)
 Anti-SMAD2/3 Antibody (A1214)
 FGF-2 Antibody (5039)
 Anti-BMP-2 Antibody (A1621)

FOR RESEARCH USE ONLY! Not to be used on humans.