

Phospho HSF1 (Ser303) Antibody

rev 12/19

CATALOG NO.: A1976-100 (100 µl)

BACKGROUND DESCRIPTION: The product of this gene is a transcription factor that is rapidly induced after temperature stress and binds heat shock promoter elements (HSE). This protein plays a role in the regulation of lifespan. Expression of this gene is repressed by phosphorylation, which promotes binding by heat shock protein 90.

ALTERNATE NAMES: HSTF1; Heat shock factor protein 1; HSF 1; Heat shock transcription factor 1; HSTF 1

ANTIBODY TYPE: Polyclonal

HOST/ISOTYPE: Rabbit / IgG

IMMUNOGEN: KLH-conjugated synthetic peptide targeting a sequence within the center region of human HSF1

MOLECULAR WEIGHT: 82 kDa

PURIFICATION: Affinity purified

FORM: Liquid

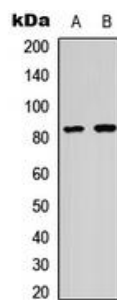
FORMULATION: In 0.42% Potassium phosphate; 0.87% NaCl; pH 7.3; 30% glycerol; and 0.01% sodium azide

SPECIES REACTIVITY: Human, Monkey, Bovine

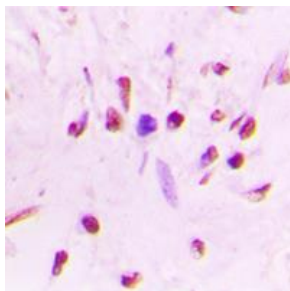
STORAGE CONDITIONS: Store at -20°C. Avoid freeze / thaw cycles

APPLICATIONS AND USAGE: WB 1:500 - 1:1000, IHC 1:100 - 1:200, IF 1:100 - 1:500

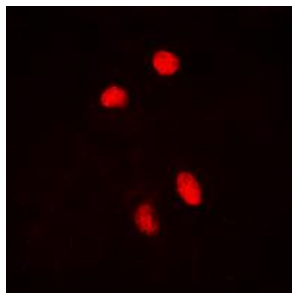
Note: This information is only intended as a guide. The optimal dilutions must be determined by the user



Western blot analysis of phospho HSF1 (Ser303) expression in HeLa (A); COLO205 (B) whole cell lysates.



Immunohistochemical analysis of phospho HSF1 (Ser303) staining in human lung cancer formalin fixed paraffin embedded tissue section. The section was pre-treated using heat mediated antigen retrieval with sodium citrate buffer (pH 6.0), then incubated with the antibody at RT and detected using an HRP conjugated compact polymer system. DAB was used as the chromogen. The section was then counterstained with hematoxylin and mounted with DPX.



Immunofluorescent analysis of phospho HSF1 (Ser303) staining in HepG2 cells. Formalin-fixed cells were permeabilized with 0.1% Triton X-100 in TBS for 5-10 minutes and blocked with 3% BSA-PBS for 30 minutes at RT. Cells were probed with the primary antibody in 3% BSA-PBS and incubated overnight at 4 C in a humidified chamber. Cells were washed with PBST and incubated with a DyLight 594-conjugated secondary antibody (red) in PBS at RT in the dark. DAPI was used to stain the cell nuclei (blue).

RELATED PRODUCTS:

HSP70 antibody (5859)
HDAC6 Antibody (3606)
Anti-p53 Antibody (A1805)
HSF1 Antibody (3812)

FOR RESEARCH USE ONLY! Not to be used on humans.