

# Phospho YBX1 (Ser102) Antibody

CATALOG NO.: A1989-100 (100 µl)

**BACKGROUND DESCRIPTION:** This gene encodes a highly conserved cold shock domain protein that has broad nucleic acid binding properties. The encoded protein functions as both a DNA and RNA binding protein and has been implicated in numerous cellular processes including regulation of transcription and translation, pre-mRNA splicing, DNA reparation and mRNA packaging. This protein is also a component of messenger ribonucleoprotein (mRNP) complexes and may have a role in microRNA processing. This protein can be secreted through non-classical pathways and functions as an extracellular mitogen. Aberrant expression of the gene is associated with cancer proliferation in numerous tissues. This gene may be a prognostic marker for poor outcome and drug resistance in certain cancers. Alternate splicing results in multiple transcript variants. Pseudogenes of this gene are found on multiple chromosomes.

**ALTERNATE NAMES:** NSEP1; YB1; Nuclease-sensitive element-binding protein 1; CCAAT-binding transcription factor I subunit A; CBF-A; DNA-binding protein B; DBPB; Enhancer factor I subunit A; EFl-A; Y-box transcription factor; Y-box-binding protein 1; YB-1

**ANTIBODY TYPE:** Polyclonal

**HOST/ISOTYPE:** Rabbit / IgG

**IMMUNOGEN:** KLH-conjugated synthetic peptide targeting a sequence within the center region of human YBX1

**MOLECULAR WEIGHT:** 36 kDa

**PURIFICATION:** Affinity purified

**FORM:** Liquid

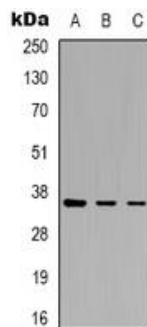
**FORMULATION:** In 0.42% Potassium phosphate; 0.87% NaCl; pH 7.3; 30% glycerol; and 0.01% sodium azide

**SPECIES REACTIVITY:** Human, Mouse, Rabbit, Rat, Chicken, Bovine

**STORAGE CONDITIONS:** Store at -20°C. Avoid freeze / thaw cycles

**APPLICATIONS AND USAGE:** WB 1:500 – 1:2000

**Note:** This information is only intended as a guide. The optimal dilutions must be determined by the user



Western blot analysis of phospho YBX1 (Ser102) expression in HeLa (A); MCF7 (B); Jurkat (C) whole cell lysates.

## RELATED PRODUCTS:

Anti-Phospho-EGFR (Tyr1173) Rabbit Monoclonal Antibody (A1593)

p44/42 MAPK (Erk1/2) Antibody (3085R)

Anti-HER2 (c-erbB-2), Rabbit Monoclonal Antibody (A1134)

Anti-Akt1 Rabbit Monoclonal Antibody (A1117)

**FOR RESEARCH USE ONLY! Not to be used on humans.**